

Product datasheet for **TA330006**

5 HT1F (HTR1F) Rabbit Polyclonal Antibody

Product data:

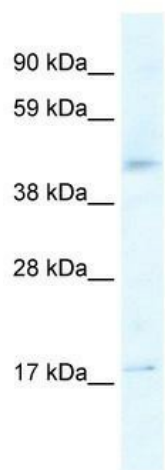
Product Type:	Primary Antibodies
Applications:	WB
Recommended Dilution:	WB
Reactivity:	Human
Host:	Rabbit
Isotype:	IgG
Clonality:	Polyclonal
Immunogen:	The immunogen for anti-HTR1F antibody: synthetic peptide directed towards the N terminal of human HTR1F. Synthetic peptide located within the following region: MDFLNSSDQNLTSSEELLNRMPSKILVSLTSLGLALMTTINSLVIAAIIV
Formulation:	Liquid. Purified antibody supplied in 1x PBS buffer with 0.09% (w/v) sodium azide and 2% sucrose. <i>Note that this product is shipped as lyophilized powder to China customers.</i>
Conjugation:	Unconjugated
Storage:	Store at -20°C as received.
Stability:	Stable for 12 months from date of receipt.
Predicted Protein Size:	42 kDa
Gene Name:	5-hydroxytryptamine receptor 1F
Database Link:	NP_000857 Entrez Gene 3355 Human P30939
Background:	The 5-HT1F receptor is present in both human vascular and neuronal tissue. This gene is localized at 3p12.
Synonyms:	5-HT-1F; 5-HT1F; 5HT6; HTR1EL; MR77
Note:	Immunogen sequence homology: Bovine: 100%; Human: 100%; Rabbit: 100%; Rat: 100%; Mouse: 93%; Pig: 86%
Protein Families:	Druggable Genome, GPCR, Transmembrane



[View online »](#)

Protein Pathways: Neuroactive ligand-receptor interaction

Product images:



WB Suggested Anti-HTR1F Antibody Titration:
2.5ug/ml; Positive Control: Human Liver