

Product datasheet for **TA330004**

APBA1 Rabbit Polyclonal Antibody

Product data:

Product Type:	Primary Antibodies
Applications:	IHC, WB
Recommended Dilution:	WB, IHC
Reactivity:	Human, Rat
Host:	Rabbit
Isotype:	IgG
Clonality:	Polyclonal
Immunogen:	The immunogen for anti-APBA1 antibody: synthetic peptide directed towards the N terminal of human APBA1. Synthetic peptide located within the following region: PPQQHYVGRHQGRALEDLRAQLGQEEEEERGECLARSASTESGFHNHTD
Formulation:	Liquid. Purified antibody supplied in 1x PBS buffer with 0.09% (w/v) sodium azide and 2% sucrose. <i>Note that this product is shipped as lyophilized powder to China customers.</i>
Conjugation:	Unconjugated
Storage:	Store at -20°C as received.
Stability:	Stable for 12 months from date of receipt.
Predicted Protein Size:	93 kDa
Gene Name:	amyloid beta precursor protein binding family A member 1
Database Link:	NP_001154 Entrez Gene 83589 Rat Entrez Gene 320 Human Q02410
Background:	APBA1 is a member of the X11 protein family. It is a neuronal adaptor protein that interacts with the Alzheimer's disease amyloid precursor protein (APP). It stabilises APP and inhibits production of proteolytic APP fragments including the A beta peptide that is deposited in the brains of Alzheimer's disease patients. APBA1 is believed to be involved in signal transduction processes. It is also regarded as a putative vesicular trafficking protein in the brain that can form a complex with the potential to couple synaptic vesicle exocytosis to neuronal cell adhesion.

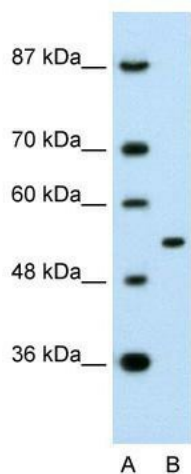


[View online »](#)

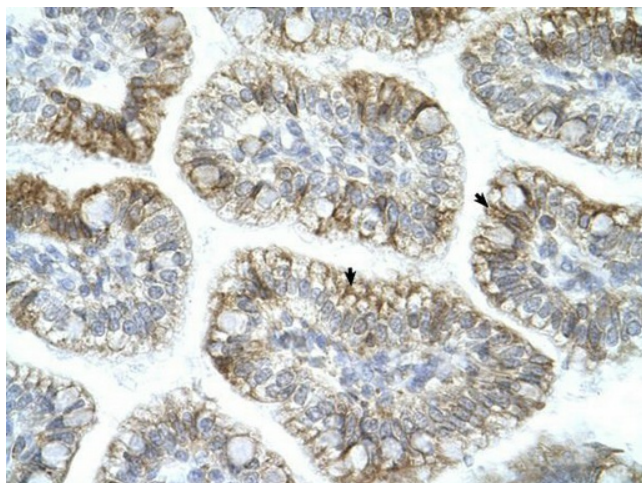
Synonyms: D9S411E; LIN10; MINT1; X11; X11A; X11ALPHA

Note: Immunogen sequence homology: Human: 100%

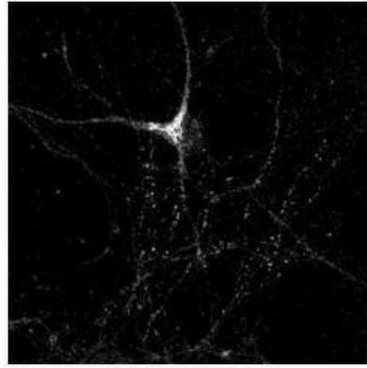
Product images:



WB Suggested Anti-APBA1 Antibody Titration: 0.2-1 ug/ml; Positive Control: Raji cell lysate APBA1 is supported by BioGPS gene expression data to be expressed in Raji



Human Intestine

APBA1**White: APBA1**

See IHC 2 Data and Customer Feedback for more Information

Sample Type : Rat Hippocampal Neurons - 14DIV
Primary Antibody Dilution : 1:200
Secondary Antibody : Anti-rabbit-Cy3
Secondary Antibody Dilution : 1:500
Color/Signal Descriptions : White:
APBA1 Gene Name : APBA1
Submitted by : Dan Fowler - University of Oregon,