

Product datasheet for **TA330003**

RAB3D Rabbit Polyclonal Antibody

Product data:

Product Type:	Primary Antibodies
Applications:	WB
Recommended Dilution:	WB
Reactivity:	Human
Host:	Rabbit
Isotype:	IgG
Clonality:	Polyclonal
Immunogen:	The immunogen for anti-RAB3D antibody: synthetic peptide directed towards the C terminal of human RAB3D. Synthetic peptide located within the following region: KENINVKQVFERLVDVICEKMNESLEPSSSSGNGKGPVAVGDAPAPQPSS
Formulation:	Liquid. Purified antibody supplied in 1x PBS buffer with 0.09% (w/v) sodium azide and 2% sucrose. <i>Note that this product is shipped as lyophilized powder to China customers.</i>
Conjugation:	Unconjugated
Storage:	Store at -20°C as received.
Stability:	Stable for 12 months from date of receipt.
Predicted Protein Size:	24 kDa
Gene Name:	RAB3D, member RAS oncogene family
Database Link:	NP_004274 Entrez Gene 9545 Human O95716
Background:	As a protein transport, RAB3D is probably involved in regulated exocytosis.
Synonyms:	D2-2; GOV; RAB16; RAD3D
Note:	Immunogen sequence homology: Human: 100%; Bovine: 86%; Rabbit: 86%; Mouse: 80%; Rat: 80%
Protein Families:	Druggable Genome



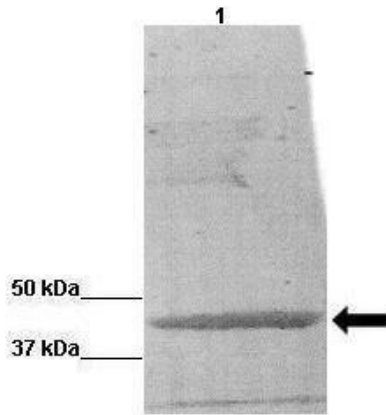
[View online »](#)

Product images:



WB Suggested Anti-RAB3D Antibody Titration: 2.5ug/ml; Positive Control: Transfected 293T

RAB3D



WB Suggested Anti-RAB3D Antibody ; Positive Control: Lane 1: BCAM0379 protein from B cenocepacia; Primary Antibody Dilution : 1:5000; Secondary Antibody : Anti-rabbit-HRP; Secondary Antibody Dilution : 1:5000; Submitted by: Katie Nurse