

Product datasheet for **TA330002**

RAB3A Rabbit Polyclonal Antibody

Product data:

| | |
|-------------------------|--|
| Product Type: | Primary Antibodies |
| Applications: | WB |
| Recommended Dilution: | WB |
| Reactivity: | Human |
| Host: | Rabbit |
| Isotype: | IgG |
| Clonality: | Polyclonal |
| Immunogen: | The immunogen for anti-RAB3A antibody: synthetic peptide directed towards the C terminal of human RAB3A. Synthetic peptide located within the following region: NVKQTFERLVDVICEKMSESLDTADPAVTGAKQGPQLSDQQVPPHQDCAC |
| Formulation: | Liquid. Purified antibody supplied in 1x PBS buffer with 0.09% (w/v) sodium azide and 2% sucrose. <i>Note that this product is shipped as lyophilized powder to China customers.</i> |
| Conjugation: | Unconjugated |
| Storage: | Store at -20°C as received. |
| Stability: | Stable for 12 months from date of receipt. |
| Predicted Protein Size: | 25 kDa |
| Gene Name: | RAB3A, member RAS oncogene family |
| Database Link: | NP_002857 Entrez Gene 5864 Human P20336 |
| Background: | RAB3A is involved in exocytosis by regulating a late step in synaptic vesicle fusion. It could play a role in neurotransmitter release by regulating membrane flow in the nerve terminal. |
| Synonyms: | RAB3A |
| Note: | Immunogen sequence homology: Human: 100%; Bovine: 86%; Dog: 86%; Guinea pig: 86%; Mouse: 86%; Pig: 86%; Rat: 86%; Sheep: 86%; African clawed frog: 80% |
| Protein Families: | Druggable Genome |



[View online »](#)

Product images:

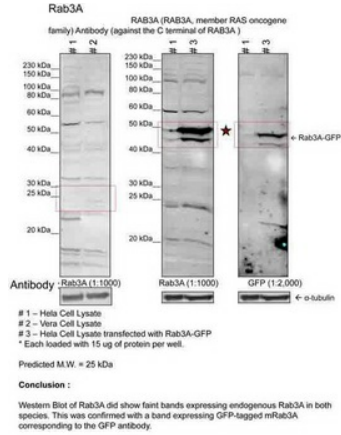
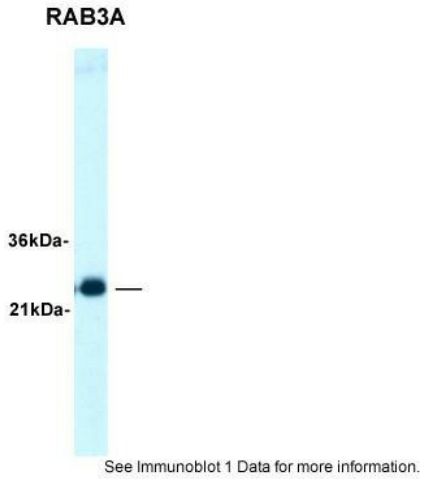


Image submitted by Dr. Jackie Szewo from Dr. Lupashin's lab at The University of Arkansas

RAB3A antibody - C-terminal region validated by WB using Fetal Brain at 1.25 ug/ml.



RAB3A antibody - C-terminal region validated by WB using 1. Human Cervical Cancer Cell Lysate (15 ug); 2. Monkey Fibroblast Cell Lysate (15 ug); 3. Human Cervical Cancer Cell transfected with mouse Rab3A-GFP (15 ug) at 1:1000.