

Product datasheet for **TA330001**

PACSIN1 Rabbit Polyclonal Antibody

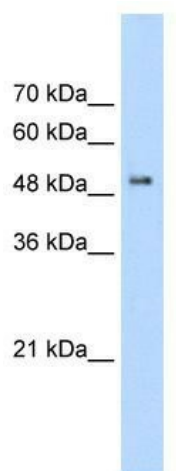
Product data:

Product Type:	Primary Antibodies
Applications:	WB
Recommended Dilution:	WB
Reactivity:	Human
Host:	Rabbit
Isotype:	IgG
Clonality:	Polyclonal
Immunogen:	The immunogen for anti-PACSIN1 antibody: synthetic peptide directed towards the C terminal of human PACSIN1. Synthetic peptide located within the following region: HTTTKKEKQPKKAEGVALTNATGAVESTSQAGDRGSVSSYDRGQPYATEW
Formulation:	Liquid. Purified antibody supplied in 1x PBS buffer with 0.09% (w/v) sodium azide and 2% sucrose. <i>Note that this product is shipped as lyophilized powder to China customers.</i>
Conjugation:	Unconjugated
Storage:	Store at -20°C as received.
Stability:	Stable for 12 months from date of receipt.
Predicted Protein Size:	51 kDa
Gene Name:	protein kinase C and casein kinase substrate in neurons 1
Database Link:	NP_065855 Entrez Gene 29993 Human Q9BY11
Background:	PACSIN1 may play a role in vesicle formation and transport.
Synonyms:	SDPI
Note:	Immunogen sequence homology: Human: 100%; Mouse: 100%; Rat: 100%; Rabbit: 92%; Dog: 85%; Goat: 85%; Horse: 85%; Pig: 85%
Protein Families:	Druggable Genome



[View online »](#)

Product images:



WB Suggested Anti-PACSIN1 Antibody Titration:
2.5 ug/ml; ELISA Titer: 1:62500; Positive Control:
Transfected 293T