

Product datasheet for **TA329993**

Tbx22 Rabbit Polyclonal Antibody

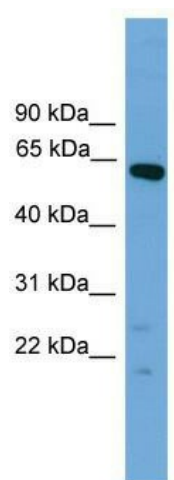
Product data:

Product Type:	Primary Antibodies
Applications:	WB
Recommended Dilution:	WB
Reactivity:	Mouse
Host:	Rabbit
Isotype:	IgG
Clonality:	Polyclonal
Immunogen:	The immunogen for anti-Tbx22 antibody: synthetic peptide corresponding to a region of Mouse. Synthetic peptide located within the following region: SVEALMGRPSKRKAQDPREEMQPELQEEQFVEEGEEILRSPSRDSQQPEK
Formulation:	Liquid. Purified antibody supplied in 1x PBS buffer with 0.09% (w/v) sodium azide and 2% sucrose.
Conjugation:	Unconjugated
Storage:	Store at -20°C as received.
Stability:	Stable for 12 months from date of receipt.
Predicted Protein Size:	58 kDa
Gene Name:	T-box 22
Database Link:	NP_660259 Entrez Gene 245572 Mouse Q8K402
Background:	Tbx22 is a probable transcriptional regulator involved in developmental processes. This is major determinant crucial to palatogenesis.
Synonyms:	ABERS; CLPA; CPX; dj795G23.1; TBXX
Note:	Immunogen sequence homology: Mouse: 100%; Rat: 86%



[View online »](#)

Product images:



WB Suggested Anti-Tbx22 Antibody Titration: 0.2-1 ug/ml; Positive Control: Mouse Brain