

Product datasheet for TA329991

Onecut3 Rabbit Polyclonal Antibody

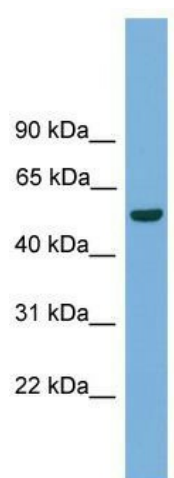
Product data:

Product Type:	Primary Antibodies
Applications:	WB
Recommended Dilution:	WB
Reactivity:	Mouse
Host:	Rabbit
Isotype:	IgG
Clonality:	Polyclonal
Immunogen:	The immunogen for anti-Onecut3 antibody: synthetic peptide directed towards the c terminal of mouse Onecut3. Synthetic peptide located within the following region: QEPEFQRMSALRLAACKRKEQDQQKERALQPKKQRLVFTDLQRRTLIAIF
Formulation:	Liquid. Purified antibody supplied in 1x PBS buffer with 0.09% (w/v) sodium azide and 2% sucrose. <i>Note that this product is shipped as lyophilized powder to China customers.</i>
Conjugation:	Unconjugated
Storage:	Store at -20°C as received.
Stability:	Stable for 12 months from date of receipt.
Predicted Protein Size:	49 kDa
Gene Name:	one cut domain, family member 3
Database Link:	NP_631972 Entrez Gene 246086 Mouse Q8K557
Background:	Onecut3 is a transcriptional activator. Onecut3 binds the consensus DNA sequence 5'-DHWATTGAYTWWD-3' on a variety of gene promoters such as those of HNF3B and TTR.
Synonyms:	OC-3; OC3
Note:	Immunogen sequence homology: Dog: 100%; Pig: 100%; Rat: 100%; Human: 100%; Mouse: 100%; Bovine: 100%; Rabbit: 90%; Zebrafish: 79%



[View online »](#)

Product images:



WB Suggested Anti-Onecut3 Antibody Titration:
0.2-1 ug/ml; Positive Control: Mouse Liver