

Product datasheet for **TA329990**

Zkscan8 Rabbit Polyclonal Antibody

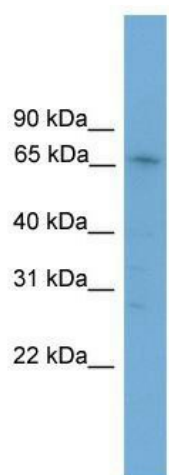
Product data:

Product Type:	Primary Antibodies
Applications:	WB
Recommended Dilution:	WB
Reactivity:	Mouse
Host:	Rabbit
Isotype:	IgG
Clonality:	Polyclonal
Immunogen:	The immunogen for anti-Zfp192 antibody: synthetic peptide corresponding to a region of Mouse. Synthetic peptide located within the following region: SQKPTPSQKGSSGDQEVTARLLTAGFQTLERIEDMAVSLIREEWLLDPSQ
Formulation:	Liquid. Purified antibody supplied in 1x PBS buffer with 0.09% (w/v) sodium azide and 2% sucrose.
Conjugation:	Unconjugated
Storage:	Store at -20°C as received.
Stability:	Stable for 12 months from date of receipt.
Predicted Protein Size:	67 kDa
Gene Name:	zinc finger with KRAB and SCAN domains 8
Database Link:	NP_631880 Entrez Gene 93681 Mouse
Background:	The function of this protein remains unknown.
Synonyms:	LD5-1; ZNF192; ZSCAN40
Note:	Immunogen sequence homology: Rat: 100%; Mouse: 100%; Pig: 93%; Dog: 86%; Human: 86%; Rabbit: 83%; Bovine: 79%; Horse: 77%



[View online »](#)

Product images:



WB Suggested Anti-Zfp192 Antibody Titration:
0.2-1 ug/ml; Positive Control: SP2/0 cell lysate