

Product datasheet for **TA329985**

Ces2a Rabbit Polyclonal Antibody

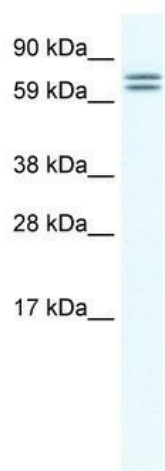
Product data:

Product Type:	Primary Antibodies
Applications:	WB
Recommended Dilution:	WB
Reactivity:	Mouse
Host:	Rabbit
Isotype:	IgG
Clonality:	Polyclonal
Immunogen:	The immunogen for anti-CES6 antibody: synthetic peptide corresponding to a region of Mouse. Synthetic peptide located within the following region: MQSGVALLPDLISDTSEVVYKTVANLSGCEATDSEALIHCLRAKSKQEIL
Formulation:	Liquid. Purified antibody supplied in 1x PBS buffer with 0.09% (w/v) sodium azide and 2% sucrose.
Conjugation:	Unconjugated
Storage:	Store at -20°C as received.
Stability:	Stable for 12 months from date of receipt.
Predicted Protein Size:	61 kDa
Gene Name:	carboxylesterase 2A
Database Link:	NP_598721 Entrez Gene 102022 Mouse Q8QZR3
Background:	Mouse Ces6 is a member of carboxylesterases family. Carboxylesterases are enzymes that catalyze the hydrolysis of a wide range of ester-containing endogenous and xenobiotic compounds.
Synonyms:	9130231C15Rik; AI266984; Ces6
Note:	Immunogen sequence homology: Rat: 100%; Mouse: 100%



[View online »](#)

Product images:



WB Suggested Anti-CES6 Antibody Titration: 1.25 ug/ml; ELISA Titer: 1:312500; Positive Control: NIH/3T3 cell lysate