

Product datasheet for TA329980

Rfxap Rabbit Polyclonal Antibody

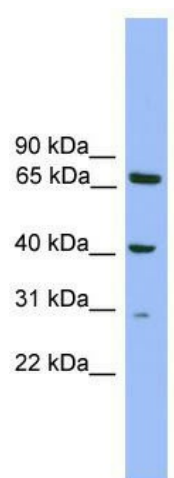
Product data:

Product Type:	Primary Antibodies
Applications:	WB
Recommended Dilution:	WB
Reactivity:	Mouse
Host:	Rabbit
Isotype:	IgG
Clonality:	Polyclonal
Immunogen:	The immunogen for anti-Rfxap antibody: synthetic peptide corresponding to a region of Mouse. Synthetic peptide located within the following region: DAEDEAGDDDADLLDTS DPAGGGESAASPEELED AEGGGAARRRGSKT
Formulation:	Liquid. Purified antibody supplied in 1x PBS buffer with 0.09% (w/v) sodium azide and 2% sucrose. <i>Note that this product is shipped as lyophilized powder to China customers.</i>
Conjugation:	Unconjugated
Storage:	Store at -20°C as received.
Stability:	Stable for 12 months from date of receipt.
Predicted Protein Size:	25 kDa
Gene Name:	regulatory factor X-associated protein
Database Link:	NP_573494 Entrez Gene 170767 Mouse Q8VCG9
Background:	The function of this protein remains unknown.
Synonyms:	RFXAP
Note:	Immunogen sequence homology: Mouse: 100%; Rat: 93%; Pig: 86%; Guinea pig: 86%; Dog: 79%; Horse: 79%; Human: 79%; Bovine: 79%; Rabbit: 79%



[View online »](#)

Product images:



WB Suggested Anti-Rfxap Antibody Titration: 0.2-1 ug/ml; ELISA Titer: 1:312500; Positive Control: Mouse Kidney