

Product datasheet for **TA329979**

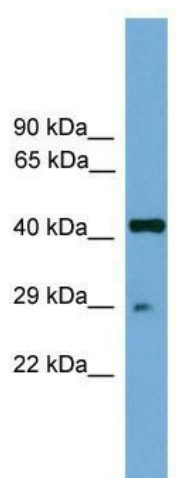
Rfxap Rabbit Polyclonal Antibody

Product data:

Product Type:	Primary Antibodies
Applications:	WB
Recommended Dilution:	WB
Reactivity:	Mouse
Host:	Rabbit
Isotype:	IgG
Clonality:	Polyclonal
Immunogen:	The immunogen for anti-Rfxap antibody: synthetic peptide corresponding to a region of Mouse. Synthetic peptide located within the following region: CTYEGCRETTSQVAKQRKPWMCKKHRNKMYKDKYKKKKSDQALGSGGPSA
Formulation:	Liquid. Purified antibody supplied in 1x PBS buffer with 0.09% (w/v) sodium azide and 2% sucrose. <i>Note that this product is shipped as lyophilized powder to China customers.</i>
Conjugation:	Unconjugated
Storage:	Store at -20°C as received.
Stability:	Stable for 12 months from date of receipt.
Predicted Protein Size:	25 kDa
Gene Name:	regulatory factor X-associated protein
Database Link:	NP_573494 Entrez Gene 170767 Mouse Q8VCG9
Background:	The function of this protein remains unknown.
Synonyms:	RFXAP
Note:	Immunogen sequence homology: Dog: 100%; Pig: 100%; Rat: 100%; Horse: 100%; Human: 100%; Mouse: 100%; Bovine: 100%; Rabbit: 100%; Guinea pig: 100%; Zebrafish: 93%



[View online »](#)

Product images:

WB Suggested Anti-Rfxap Antibody Titration: 0.2-1 ug/ml; Positive Control: Mouse Muscle