

Product datasheet for **TA329976**

Dmbx1 Rabbit Polyclonal Antibody

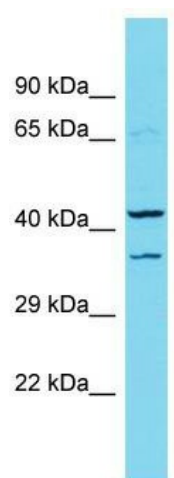
Product data:

Product Type:	Primary Antibodies
Applications:	WB
Recommended Dilution:	WB
Reactivity:	Rat
Host:	Rabbit
Isotype:	IgG
Clonality:	Polyclonal
Immunogen:	The immunogen for Anti-Dmbx1 antibody is: synthetic peptide directed towards the middle region of Rat Dmbx1. Synthetic peptide located within the following region: QLDREEDSRAEEPKAEEKSPGSESKVLGCKRASP KADSPGSLAITPAAPAG
Formulation:	Liquid. Purified antibody supplied in 1x PBS buffer with 0.09% (w/v) sodium azide and 2% sucrose.
Conjugation:	Unconjugated
Storage:	Store at -20°C as received.
Stability:	Stable for 12 months from date of receipt.
Predicted Protein Size:	41 kDa
Gene Name:	diencephalon/mesencephalon homeobox 1
Database Link:	NP_001101431 Entrez Gene 313512 Rat
Background:	The function of this protein remains unknown.
Synonyms:	MBX; OTX3; PAXB
Note:	Immunogen sequence homology: Rat: 93%; Mouse: 93%; Pig: 75%; Human: 75%; Guinea pig: 75%



[View online »](#)

Product images:



Host: Rabbit; Target Name: Dmbx1; Sample
Tissue: Rat Pancreas lysates; Antibody Dilution:
1.0 ug/ml