

Product datasheet for **TA329975**

Dmbx1 Rabbit Polyclonal Antibody

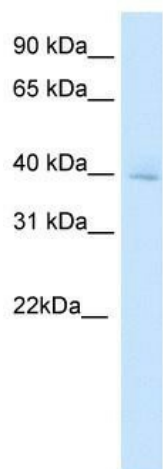
Product data:

Product Type:	Primary Antibodies
Applications:	IHC, WB
Recommended Dilution:	WB, IHC
Reactivity:	Human, Mouse
Host:	Rabbit
Isotype:	IgG
Clonality:	Polyclonal
Immunogen:	The immunogen for anti-DMBX1 antibody: synthetic peptide directed towards the middle region of mouse DMBOX1. Synthetic peptide located within the following region: LSLSEQSASESAPEDQLDREEDSRAEEPKAEEKSPGSESKVPGCKRGSPKA
Formulation:	Liquid. Purified antibody supplied in 1x PBS buffer with 0.09% (w/v) sodium azide and 2% sucrose.
Conjugation:	Unconjugated
Storage:	Store at -20°C as received.
Stability:	Stable for 12 months from date of receipt.
Predicted Protein Size:	41 kDa
Gene Name:	diencephalon/mesencephalon homeobox 1
Database Link:	NP_001020738 Entrez Gene 127343 Human Entrez Gene 140477 Mouse Q91ZK4
Background:	Transcription factors containing a homeodomain play an important role in the organogenesis of vertebrates. Otx3/Dmbx1 is a member of paired class homeodomain transcription factors. Otx3/Dmbx1 represses the Otx2-mediated transactivation in the developing brain by forming heterodimer with Otx2 on the P3C (TAATCCGATTA) sequence in vitro.
Synonyms:	MBX; OTX3; PAXB
Note:	Immunogen sequence homology: Dog: 100%; Pig: 100%; Rat: 100%; Horse: 100%; Human: 100%; Mouse: 100%; Bovine: 100%; Rabbit: 100%; Guinea pig: 100%



[View online »](#)

Product images:



WB Suggested Anti-DMBX1 Antibody Titration:
0.2-1 ug/ml; ELISA Titer: 1:62500; Positive Control:
Human brain

