

Product datasheet for **TA329974**

Sp7 Rabbit Polyclonal Antibody

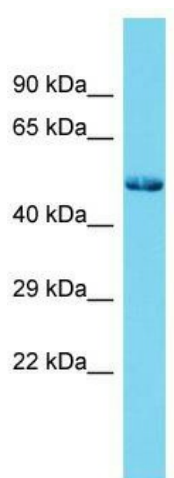
Product data:

Product Type:	Primary Antibodies
Applications:	WB
Recommended Dilution:	WB
Reactivity:	Rat
Host:	Rabbit
Isotype:	IgG
Clonality:	Polyclonal
Immunogen:	The immunogen for Anti-Sp7 antibody is: synthetic peptide directed towards the N-terminal region of Rat Sp7. Synthetic peptide located within the following region: MLTAACSKFGGSSPLRDSTALGKGGTKKPYTDLSAPKTMGDAYPAPFSST
Formulation:	Liquid. Purified antibody supplied in 1x PBS buffer with 0.09% (w/v) sodium azide and 2% sucrose. <i>Note that this product is shipped as lyophilized powder to China customers.</i>
Conjugation:	Unconjugated
Storage:	Store at -20°C as received.
Stability:	Stable for 12 months from date of receipt.
Predicted Protein Size:	45 kDa
Gene Name:	Sp7 transcription factor
Database Link:	NP_001032721 Entrez Gene 300260 Rat
Background:	Q6IMK1 may act as a transcription factor; mouse homolog is required for bone formation and osteoblast differentiation.
Synonyms:	MGC126598; osterix; OSX
Note:	Immunogen sequence homology: Mouse: 100%; Pig: 93%; Rat: 93%; Horse: 93%; Human: 93%; Bovine: 93%; Dog: 86%; Rabbit: 86%; Guinea pig: 86%



[View online »](#)

Product images:



Host: Rabbit; Target Name: Sp7; Sample Tissue: Rat Testis lysates; Antibody Dilution: 1.0 μ g/ml