

Product datasheet for **TA329973**

Bhlhe23 Rabbit Polyclonal Antibody

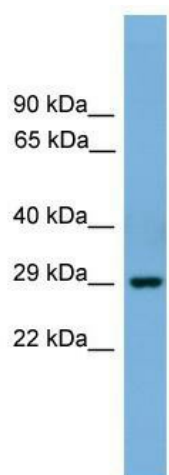
Product data:

Product Type:	Primary Antibodies
Applications:	WB
Recommended Dilution:	WB
Reactivity:	Mouse
Host:	Rabbit
Isotype:	IgG
Clonality:	Polyclonal
Immunogen:	The immunogen for anti-Bhlhb4 antibody: synthetic peptide directed towards the n terminal of mouse Bhlhb4. Synthetic peptide located within the following region: MAELKSLSGDSYLALSHSYTATGHAYAAARGPETTRGFGASGPGDLPAA
Formulation:	Liquid. Purified antibody supplied in 1x PBS buffer with 0.09% (w/v) sodium azide and 2% sucrose.
Conjugation:	Unconjugated
Storage:	Store at -20°C as received.
Stability:	Stable for 12 months from date of receipt.
Predicted Protein Size:	24 kDa
Gene Name:	basic helix-loop-helix family, member e23
Database Link:	NP_542372 Entrez Gene 140489 Mouse Q8BGW3
Background:	May function as transcriptional repressor. May modulate the expression of genes required for the differentiation and/or maintenance of pancreatic and neuronal cell types. May be important for rod bipolar cell maturation.
Synonyms:	bA305P22.3; Beta4; bHLHB4
Note:	Immunogen sequence homology: Mouse: 100%; Rat: 93%



[View online »](#)

Product images:



WB Suggested Anti-Bhlhb4 Antibody Titration:
0.2-1 ug/ml; Positive Control: Mouse Brain