

Product datasheet for **TA329971**

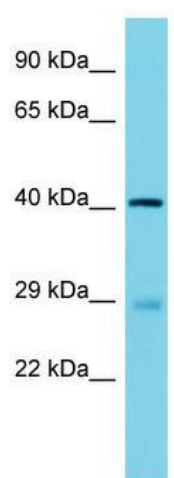
Vsx1 Rabbit Polyclonal Antibody

Product data:

Product Type:	Primary Antibodies
Applications:	WB
Recommended Dilution:	WB
Reactivity:	Mouse
Host:	Rabbit
Isotype:	IgG
Clonality:	Polyclonal
Immunogen:	The immunogen for Anti-Vsx1 antibody is: synthetic peptide directed towards the C-terminal region of Mouse Vsx1. Synthetic peptide located within the following region: TGMRKPESEDKLAGLWFEFDHLKKGANKDEDEDGPERGPDETTQNPENSLEDV
Formulation:	Liquid. Purified antibody supplied in 1x PBS buffer with 0.09% (w/v) sodium azide and 2% sucrose.
Conjugation:	Unconjugated
Storage:	Store at -20°C as received.
Stability:	Stable for 12 months from date of receipt.
Predicted Protein Size:	39 kDa
Gene Name:	visual system homeobox 1
Database Link:	NP_473409 Entrez Gene 114889 Mouse Q91V10
Background:	Vsx1 binds to the 37-bp core of the locus control region (LCR) of the red/green visual pigment gene cluster. Vsx1 may regulate the activity of the LCR and the cone opsin genes at earlier stages of development.
Synonyms:	KTCN; PPCD; PPD; RINX
Note:	Immunogen sequence homology: Rat: 100%; Mouse: 100%



[View online »](#)

Product images:

Host: Rabbit; Target Name: Vsx1; Sample Tissue: Mouse Testis lysates; Antibody Dilution: 1.0 ug/ml