

## Product datasheet for **TA329970**

### Foxp3 Rabbit Polyclonal Antibody

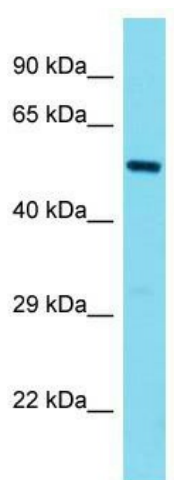
#### Product data:

Product Type:	Primary Antibodies
Applications:	WB
Recommended Dilution:	WB
Reactivity:	Mouse
Host:	Rabbit
Isotype:	IgG
Clonality:	Polyclonal
Immunogen:	The immunogen for Anti-Foxp3 antibody is: synthetic peptide directed towards the N-terminal region of Mouse Foxp3. Synthetic peptide located within the following region: LPSWK TAPKGS ELLGTRGSGGPFQGRDLRSGAHTSSSLNPLPPSQLQLPT
Formulation:	Liquid. Purified antibody supplied in 1x PBS buffer with 0.09% (w/v) sodium azide and 2% sucrose. <i>Note that this product is shipped as lyophilized powder to China customers.</i>
Conjugation:	Unconjugated
Storage:	Store at -20°C as received.
Stability:	Stable for 12 months from date of receipt.
Predicted Protein Size:	47 kDa
Gene Name:	forkhead box P3
Database Link:	<a href="#">NP_473380</a> <a href="#">Entrez Gene 20371 Mouse</a> <a href="#">Q99JB6</a>
Background:	Foxp3 is a probable transcription factor. It plays a critical role in the control of immune response.
Synonyms:	AIID; DIETER; FOXP3delta7; IPEX; JM2; MGC141961; MGC141963; PIDX; SCURFIN; XPID
Note:	Immunogen sequence homology: Rat: 100%; Mouse: 100%; Rabbit: 79%



[View online »](#)

## Product images:



Host: Rabbit; Target Name: Foxp3; Sample  
Tissue: Mouse Liver lysates; Antibody Dilution: 1.0  
ug/ml