

## Product datasheet for **TA329969**

### Smarca1 Rabbit Polyclonal Antibody

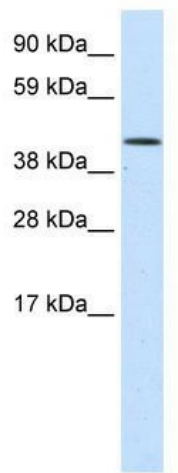
#### Product data:

Product Type:	Primary Antibodies
Applications:	WB
Recommended Dilution:	WB, ChIP
Reactivity:	Mouse, Human
Host:	Rabbit
Isotype:	IgG
Clonality:	Polyclonal
Immunogen:	The immunogen for anti-SMARCA1 antibody: synthetic peptide directed towards the N terminal of mouse SMARCA1. Synthetic peptide located within the following region: VAVSDARATVVVVEDEQPGPSTFKKEGAAAAATEGTTATEKGEKKEKITS
Formulation:	Liquid. Purified antibody supplied in 1x PBS buffer with 0.09% (w/v) sodium azide and 2% sucrose. <i>Note that this product is shipped as lyophilized powder to China customers.</i>
Conjugation:	Unconjugated
Storage:	Store at -20°C as received.
Stability:	Stable for 12 months from date of receipt.
Predicted Protein Size:	43 kDa
Gene Name:	SWI/SNF related, matrix associated, actin dependent regulator of chromatin, subfamily a, member 1
Database Link:	<a href="#">NP_444353</a> <a href="#">Entrez Gene 6594 Human</a> <a href="#">Entrez Gene 93761 Mouse</a> <a href="#">Q6PGB8</a>
Background:	cDNA library was prepared and sequenced in Mouse Genome Encyclopedia Project of Genome Exploration Research Group in Riken Genomic Sciences Center and Genome Science Laboratory in RIKEN.
Synonyms:	DKFZp686D1623; FLJ41547; ISWI; NURF140; OTTHUMP00000023983; SNF2L; SNF2L1; SNF2LB; SWI; SWI2
Note:	Immunogen sequence homology: Rat: 100%; Mouse: 100%

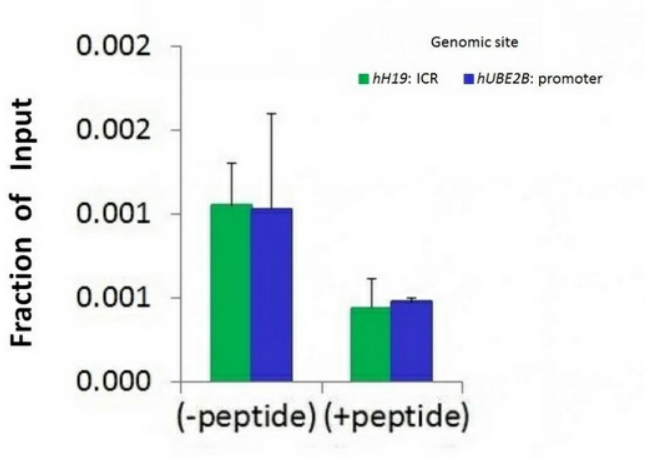


[View online »](#)

Product images:



WB Suggested Anti-SMARCA1 Antibody Titration: 1.25ug/ml; ELISA Titer: 1:312500; Positive Control: NIH/3T3 cell lysate



Chromatin Immunoprecipitation (ChIP) Using SMARCA1 antibody - N-terminal region and HCT116 Cells