

Product datasheet for **TA329967**

Tcf23 Rabbit Polyclonal Antibody

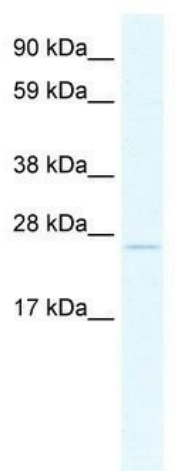
Product data:

Product Type:	Primary Antibodies
Applications:	WB
Recommended Dilution:	WB
Reactivity:	Mouse
Host:	Rabbit
Isotype:	IgG
Clonality:	Polyclonal
Immunogen:	The immunogen for anti-TCF23 antibody: synthetic peptide directed towards the C terminal of mouse TCF23. Synthetic peptide located within the following region: PMRSRLYAGGLGCSLDSTTAITTGQRCKDAELGSQDSVAAESLLTSPAF
Formulation:	Liquid. Purified antibody supplied in 1x PBS buffer with 0.09% (w/v) sodium azide and 2% sucrose. <i>Note that this product is shipped as lyophilized powder to China customers.</i>
Conjugation:	Unconjugated
Storage:	Store at -20°C as received.
Stability:	Stable for 12 months from date of receipt.
Predicted Protein Size:	23 kDa
Gene Name:	transcription factor 23
Database Link:	NP_444315 Entrez Gene 69852 Mouse Q9JLR5
Background:	TCF23 belongs to the basic helix-loop-helix (bHLH) family are involved in various cell differentiation processes
Synonyms:	bHLHa24; OUT
Note:	Immunogen sequence homology: Mouse: 100%



[View online »](#)

Product images:



WB Suggested Anti-TCF23 Antibody Titration:
2.5ug/ml; ELISA Titer: 1:62500; Positive Control:
SP2/O cell lysate