

Product datasheet for **TA329966**

Lmx1a Rabbit Polyclonal Antibody

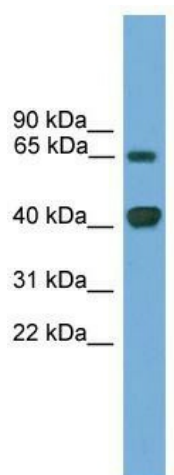
Product data:

Product Type:	Primary Antibodies
Applications:	WB
Recommended Dilution:	WB
Reactivity:	Mouse
Host:	Rabbit
Isotype:	IgG
Clonality:	Polyclonal
Immunogen:	The immunogen for anti-Lmx1a antibody: synthetic peptide directed towards the middle region of mouse Lmx1a. Synthetic peptide located within the following region: KKLARRQQQQQDQQNTQRLTSAQTNGSGNAGMEGIMNPYTTLPTPQQL
Formulation:	Liquid. Purified antibody supplied in 1x PBS buffer with 0.09% (w/v) sodium azide and 2% sucrose. <i>Note that this product is shipped as lyophilized powder to China customers.</i>
Conjugation:	Unconjugated
Storage:	Store at -20°C as received.
Stability:	Stable for 12 months from date of receipt.
Predicted Protein Size:	43 kDa
Gene Name:	LIM homeobox transcription factor 1 alpha
Database Link:	NP_387501 Entrez Gene 110648 Mouse Q9JKU8
Background:	Lmx1a acts as a transcriptional activator by binding to an A/T-rich sequence, the FLAT element, in the insulin gene promoter. Lmx1a is required for development of the roof plate and, in turn, for specification of dorsal cell fates in the CNS and developing vertebrae.
Synonyms:	LMX-1; LMX-1.1; LMX1; LMX1.1; MGC87616; OTTHUMP00000032531
Note:	Immunogen sequence homology: Mouse: 100%; Dog: 93%; Pig: 93%; Rat: 93%; Human: 93%; Bovine: 93%; Rabbit: 93%; Guinea pig: 93%; Horse: 86%



[View online »](#)

Product images:



WB Suggested Anti-Lmx1a Antibody Titration: 0.2-1 ug/ml; ELISA Titer: 1:12500; Positive Control: Mouse Small Intestine