

Product datasheet for **TA329964**

Hes7 Rabbit Polyclonal Antibody

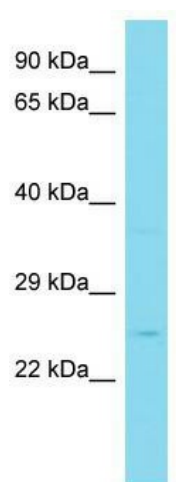
Product data:

Product Type:	Primary Antibodies
Applications:	WB
Recommended Dilution:	WB
Reactivity:	Mouse
Host:	Rabbit
Isotype:	IgG
Clonality:	Polyclonal
Immunogen:	The immunogen for Anti-Hes7 antibody is: synthetic peptide directed towards the N-terminal region of Mouse Hes7. Synthetic peptide located within the following region: RERSRVEPPGVPRSPGQDAEALASCYLSGFRECLLRLAFAHDASPAARS
Formulation:	Liquid. Purified antibody supplied in 1x PBS buffer with 0.09% (w/v) sodium azide and 2% sucrose. <i>Note that this product is shipped as lyophilized powder to China customers.</i>
Conjugation:	Unconjugated
Storage:	Store at -20°C as received.
Stability:	Stable for 12 months from date of receipt.
Predicted Protein Size:	25 kDa
Gene Name:	hairy and enhancer of split 7 (Drosophila)
Database Link:	NP_149030 Entrez Gene 84653 Mouse Q8BKT2
Background:	Hes7 is a transcriptional repressor. Hes7 represses transcription from both N box- and E box-containing promoters. Hes7 may with HES1, cooperatively regulate somite formation in the presomitic mesoderm (PSM). Hes7 may function as a segmentation clock, which is essential for coordinated somite segmentation.
Synonyms:	bHLHb37; hHes7
Note:	Immunogen sequence homology: Rat: 100%; Mouse: 100%; Rabbit: 100%; Dog: 93%; Pig: 93%; Horse: 93%; Human: 93%; Bovine: 93%; Guinea pig: 93%



[View online »](#)

Product images:



Host: Rabbit; Target Name: Hes7; Sample Tissue: Mouse Stomach lysates; Antibody Dilution: 1.0 ug/ml