

## Product datasheet for **TA329961**

### Jdp2 Rabbit Polyclonal Antibody

#### Product data:

Product Type:	Primary Antibodies
Applications:	WB
Recommended Dilution:	WB
Reactivity:	Mouse
Host:	Rabbit
Isotype:	IgG
Clonality:	Polyclonal
Immunogen:	The immunogen for anti-Jundm2 antibody: synthetic peptide directed towards the c terminal of mouse Jundm2. Synthetic peptide located within the following region: LKTQIEELKLERQQLILMLNRHRPTCIVRTDSVRTPESEGNPLLEQLDKK
Formulation:	Liquid. Purified antibody supplied in 1x PBS buffer with 0.09% (w/v) sodium azide and 2% sucrose. <i>Note that this product is shipped as lyophilized powder to China customers.</i>
Conjugation:	Unconjugated
Storage:	Store at -20°C as received.
Stability:	Stable for 12 months from date of receipt.
Predicted Protein Size:	19 kDa
Gene Name:	Jun dimerization protein 2
Database Link:	<a href="#">NP_112149</a> <a href="#">Entrez Gene 81703 Mouse P97875</a>
Background:	Jundm2 is a component of the AP-1 transcription factor that represses transactivation mediated by the Jun family of proteins. Jundm2 is involved in a variety of transcriptional responses associated with AP-1, such as UV-induced apoptosis, cell differentiation, tumorigenesis and antitumogenesis. Jundm2 can also function as a repressor by recruiting histone deacetylase 3/HDAC3 to the promoter region of JUN. Jundm2 may control transcription via direct regulation of the modification of histones and the assembly of chromatin.

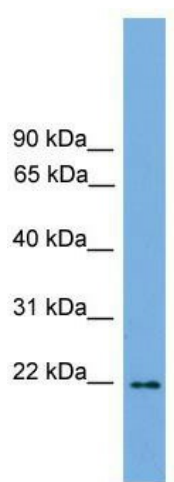


[View online »](#)

**Synonyms:** JUNDM2

**Note:** Immunogen sequence homology: Rat: 100%; Mouse: 100%; Dog: 93%; Pig: 93%; Horse: 93%; Human: 93%; Bovine: 93%; Guinea pig: 93%

**Product images:**



WB Suggested Anti-Jundm2 Antibody Titration:  
0.2-1 ug/ml; Positive Control: Mouse Heart