

Product datasheet for **TA329956**

Spz1 Rabbit Polyclonal Antibody

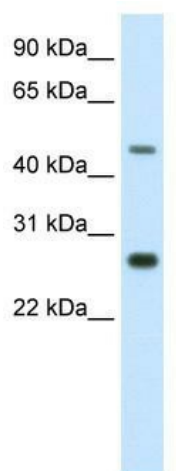
Product data:

Product Type:	Primary Antibodies
Applications:	WB
Recommended Dilution:	WB
Reactivity:	Mouse
Host:	Rabbit
Isotype:	IgG
Clonality:	Polyclonal
Immunogen:	The immunogen for anti-SPZ1 antibody: synthetic peptide directed towards the C terminal of mouse SPZ1. Synthetic peptide located within the following region: KKCPKLAEADKTDAFKHTRATEGTIRKPKILRSPDVCFTKKARNRFNA
Formulation:	Liquid. Purified antibody supplied in 1x PBS buffer with 0.09% (w/v) sodium azide and 2% sucrose.
Conjugation:	Unconjugated
Storage:	Store at -20°C as received.
Stability:	Stable for 12 months from date of receipt.
Predicted Protein Size:	42 kDa
Gene Name:	spermatogenic leucine zipper 1
Database Link:	NP_084513 Entrez Gene 79401 Mouse Q99MY0
Background:	Spz1, a novel bHLH-Zip protein, is specifically expressed in testis.
Synonyms:	FLJ25709; NYD-TSP1; TSP1
Note:	Immunogen sequence homology: Mouse: 100%



[View online »](#)

Product images:



WB Suggested Anti-SPZ1 Antibody Titration: 2.5 ug/ml; ELISA Titer: 1:312500; Positive Control: NIH/3T3 cell lysate