

## Product datasheet for **TA329954**

### Taf7l Rabbit Polyclonal Antibody

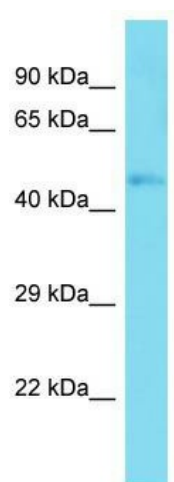
#### Product data:

Product Type:	Primary Antibodies
Applications:	WB
Recommended Dilution:	WB
Reactivity:	Mouse
Host:	Rabbit
Isotype:	IgG
Clonality:	Polyclonal
Immunogen:	The immunogen for Anti-Taf7l antibody is: synthetic peptide directed towards the C-terminal region of MOUSE Taf7l. Synthetic peptide located within the following region: QMIYKKAQRQKELLRKVENLTLKRHFQNVLGKLNIMEKEKCEQIYHLQEQ
Formulation:	Liquid. Purified antibody supplied in 1x PBS buffer with 0.09% (w/v) sodium azide and 2% sucrose. <i>Note that this product is shipped as lyophilized powder to China customers.</i>
Conjugation:	Unconjugated
Storage:	Store at -20°C as received.
Stability:	Stable for 12 months from date of receipt.
Predicted Protein Size:	51 kDa
Gene Name:	TATA-box binding protein associated factor 7 like
Database Link:	<a href="#">NP_083234</a> <a href="#">Entrez Gene 74469 Mouse</a> <a href="#">Q9D3R9</a>
Background:	Taf7l probably functions as a spermatogenesis-specific component of the DNA-binding general transcription factor complex TFIID, a multimeric protein complex that plays a central role in mediating promoter responses to various activators and repressors. It may play a role in spermatogenesis.
Synonyms:	CT40; FLJ23157; TAF2Q
Note:	Immunogen sequence homology: Mouse: 100%; Rat: 91%; Bovine: 82%; Pig: 75%



[View online »](#)

## Product images:



Host: Rabbit; Target Name: Taf7l; Sample Tissue: Mouse Muscle lysates; Antibody Dilution: 1.0 ug/ml