

Product datasheet for **TA329953**

Rnf6 Rabbit Polyclonal Antibody

Product data:

Product Type:	Primary Antibodies
Applications:	IHC, WB
Recommended Dilution:	WB, IHC
Reactivity:	Mouse
Host:	Rabbit
Isotype:	IgG
Clonality:	Polyclonal
Immunogen:	The immunogen for anti-RNF6 antibody: synthetic peptide directed towards the N terminal of mouse RNF6. Synthetic peptide located within the following region: MDPSRSRSGGSGEESFQENERRWQQLHREEAYYQFINELSDDEDYRLM
Formulation:	Liquid. Purified antibody supplied in 1x PBS buffer with 0.09% (w/v) sodium azide and 2% sucrose.
Conjugation:	Unconjugated
Storage:	Store at -20°C as received.
Stability:	Stable for 12 months from date of receipt.
Predicted Protein Size:	73 kDa
Gene Name:	ring finger protein (C3H2C3 type) 6
Database Link:	NP_083050 Entrez Gene 74132 Mouse Q9DBU5
Background:	Rnf6 is involved in neuronal development. High Rnf6 protein levels can be detected in developing axonal projections of motor and DRG neurons during mouse embryogenesis.
Synonyms:	DKFZp686P0776; OTTHUMP00000018154
Note:	Immunogen sequence homology: Mouse: 100%; Rat: 93%

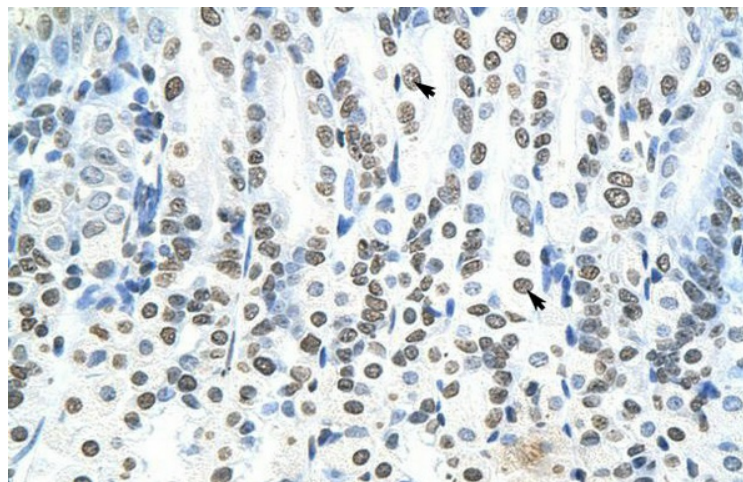


[View online »](#)

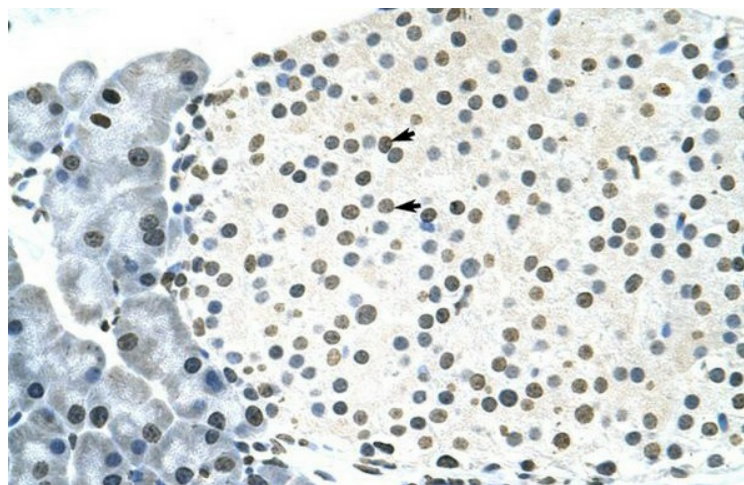
Product images:



WB Suggested Anti-RNF6 Antibody Titration:
1.25ug/ml; Positive Control: SP2/0 cell lysate



Mouse Pancreas



Mouse intestine