

Product datasheet for TA329951

Parn Rabbit Polyclonal Antibody

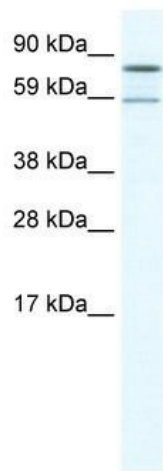
Product data:

Product Type:	Primary Antibodies
Applications:	WB
Recommended Dilution:	WB
Reactivity:	Mouse, Human
Host:	Rabbit
Isotype:	IgG
Clonality:	Polyclonal
Immunogen:	The immunogen for anti-PARN antibody: synthetic peptide corresponding to a region of Mouse. Synthetic peptide located within the following region: IEEADFFAIDGFEFSGISNGPSVTALTSGFDTPPEERYQKLKKHSMDFLLFQ
Formulation:	Liquid. Purified antibody supplied in 1x PBS buffer with 0.09% (w/v) sodium azide and 2% sucrose. <i>Note that this product is shipped as lyophilized powder to China customers.</i>
Conjugation:	Unconjugated
Storage:	Store at -20°C as received.
Stability:	Stable for 12 months from date of receipt.
Predicted Protein Size:	69 kDa
Gene Name:	poly(A)-specific ribonuclease (deadenylation nuclease)
Database Link:	NP_083037 Entrez Gene 5073 Human Entrez Gene 74108 Mouse Q8VDG3
Background:	PARN is an oligomeric, processive, and cap-interacting 3' exonuclease.
Synonyms:	DAN
Note:	Immunogen sequence homology: Dog: 100%; Pig: 100%; Rat: 100%; Horse: 100%; Human: 100%; Mouse: 100%; Bovine: 100%; Rabbit: 100%; Guinea pig: 100%; Zebrafish: 83%

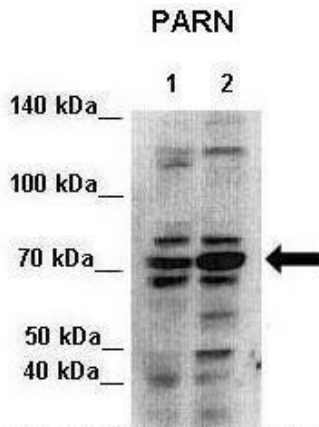


[View online »](#)

Product images:



WB Suggested Anti-PARN Antibody Titration: 1.25ug/ml; ELISA Titer: 1:312500; Positive Control: SP2/0 cell lysate



Lanes: Lane 1: 7 ug HEK293 cytoplasmic lysate; 2: 7ug HEK293 nuclei lysate; Primary Antibody Dilution:1:500; Secondary Antibody: Anti-rabbit-HRP; Secondary Antibody Dilution:1:500; Gene Name:PARN; Submitted by:Seiji Masuda, Kitashirakawa Oiwakecho, Kyoto

See Immunoblot 2 Data and Customer Feedback for more Information