

Product datasheet for **TA329948**

Brf1 Rabbit Polyclonal Antibody

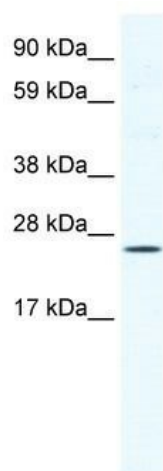
Product data:

Product Type:	Primary Antibodies
Applications:	WB
Recommended Dilution:	WB
Reactivity:	Mouse
Host:	Rabbit
Isotype:	IgG
Clonality:	Polyclonal
Immunogen:	The immunogen for anti-BRF1 antibody: synthetic peptide corresponding to a region of Mouse. Synthetic peptide located within the following region: PALGAEPIKPSAVLVESGPVSYHPPEEDADEEDAEDGEDGPCVSALQMMGG
Formulation:	Liquid. Purified antibody supplied in 1x PBS buffer with 0.09% (w/v) sodium azide and 2% sucrose. <i>Note that this product is shipped as lyophilized powder to China customers.</i>
Conjugation:	Unconjugated
Storage:	Store at -20°C as received.
Stability:	Stable for 12 months from date of receipt.
Predicted Protein Size:	22 kDa
Gene Name:	BRF1, RNA polymerase III transcription initiation factor 90 kDa subunit
Database Link:	NP_082469 Entrez Gene 72308 Mouse
Background:	BRF1 is one of the three subunits of the RNA polymerase III transcription factor complex. This complex plays a central role in transcription initiation by RNA polymerase III on genes encoding tRNA, 5S rRNA, and other small structural RNAs.
Synonyms:	BRF; BRF-1; FLJ42674; FLJ43034; GTF3B; hBRF; hTFIIIB90; MGC105048; TAF3B2; TAF3C; TAFIII90; TF3B90; TFIIIB90
Note:	Immunogen sequence homology: Rat: 100%; Mouse: 100%; Dog: 92%; Yeast: 90%; Bovine: 86%



[View online »](#)

Product images:



WB Suggested Anti-BRF1 Antibody Titration:
1.25ug/ml; ELISA Titer: 1:62500; Positive Control:
NIH/3T3 cell lysate