

Product datasheet for **TA329945**

Dmrtc2 Rabbit Polyclonal Antibody

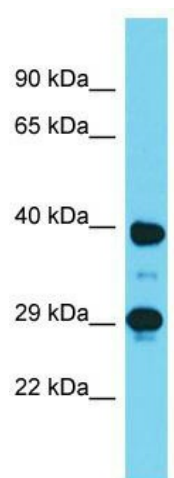
Product data:

Product Type:	Primary Antibodies
Applications:	WB
Recommended Dilution:	WB
Reactivity:	Mouse
Host:	Rabbit
Isotype:	IgG
Clonality:	Polyclonal
Immunogen:	The immunogen for Anti-Dmrtc2 antibody is: synthetic peptide directed towards the C-terminal region of Mouse Dmrtc2. Synthetic peptide located within the following region: SCLAWTSGPSEQLQREAAEALVGLKDSSQAPRLTPSVPPNPAWISLLHP
Formulation:	Liquid. Purified antibody supplied in 1x PBS buffer with 0.09% (w/v) sodium azide and 2% sucrose. <i>Note that this product is shipped as lyophilized powder to China customers.</i>
Conjugation:	Unconjugated
Storage:	Store at -20°C as received.
Stability:	Stable for 12 months from date of receipt.
Predicted Protein Size:	39 kDa
Gene Name:	doublesex and mab-3 related transcription factor like family C2
Database Link:	NP_082008 Entrez Gene 71241 Mouse Q8CGW9
Background:	Dmrtc2 may be involved in sexual development.
Synonyms:	DMRTC2
Note:	Immunogen sequence homology: Rat: 100%; Horse: 100%; Mouse: 100%; Bovine: 100%; Rabbit: 100%; Dog: 93%; Pig: 93%; Human: 93%; Guinea pig: 93%



[View online »](#)

Product images:



Host: Rabbit; Target Name: Dmrtc2; Sample
Tissue: Mouse Stomach lysates; Antibody
Dilution: 1.0ug/ml