

Product datasheet for **TA329943**

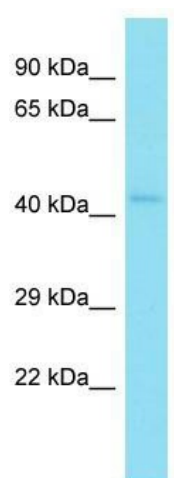
Hsfy2 Rabbit Polyclonal Antibody

Product data:

Product Type:	Primary Antibodies
Applications:	WB
Recommended Dilution:	WB
Reactivity:	Mouse
Host:	Rabbit
Isotype:	IgG
Clonality:	Polyclonal
Immunogen:	The immunogen for Anti-Hsfy2 antibody is: synthetic peptide directed towards the C-terminal region of Mouse Hsfy2. Synthetic peptide located within the following region: SLGVAVQTSERNLLSSSSISNVYLRQKPSLAQGGSDTMDVIRSDFLATP
Formulation:	Liquid. Purified antibody supplied in 1x PBS buffer with 0.09% (w/v) sodium azide and 2% sucrose.
Conjugation:	Unconjugated
Storage:	Store at -20°C as received.
Stability:	Stable for 12 months from date of receipt.
Predicted Protein Size:	44 kDa
Gene Name:	heat shock transcription factor, Y-linked 2
Database Link:	NP_081937 Entrez Gene 71066 Mouse
Background:	The function of this protein remains unknown.
Synonyms:	FLJ25453; HSF2-like; HSF2L; HSFY
Note:	Immunogen sequence homology: Mouse: 100%; Rat: 85%



[View online »](#)

Product images:

Host: Rabbit; Target Name: Hsfy2; Sample Tissue: Mouse Brain lysates; Antibody Dilution: 1.0ug/ml