

Product datasheet for **TA329941**

Bola1 Rabbit Polyclonal Antibody

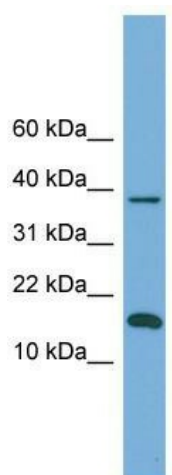
Product data:

Product Type:	Primary Antibodies
Applications:	WB
Recommended Dilution:	WB
Reactivity:	Mouse
Host:	Rabbit
Isotype:	IgG
Clonality:	Polyclonal
Immunogen:	The immunogen for anti-Bola1 antibody: synthetic peptide directed towards the n terminal of mouse Bola1. Synthetic peptide located within the following region: MLSARSAQCMVSMATRSCVSRGSAGSAAAGPVEAAIRAKLEQALSPEVLE
Formulation:	Liquid. Purified antibody supplied in 1x PBS buffer with 0.09% (w/v) sodium azide and 2% sucrose. <i>Note that this product is shipped as lyophilized powder to China customers.</i>
Purification:	Affinity Purified
Conjugation:	Unconjugated
Storage:	Store at -20°C as received.
Stability:	Stable for 12 months from date of receipt.
Predicted Protein Size:	14 kDa
Gene Name:	bolA-like 1 (E. coli)
Database Link:	NP_081251 Entrez Gene 69168 Mouse Q9D8S9
Background:	The function of the protein remains unknown.
Synonyms:	CGI-143; MGC75015; OTTHUMP00000013911; OTTHUMP00000013912; RP11-196G18.18
Note:	Immunogen sequence homology: Rat: 100%; Mouse: 100%; Rabbit: 100%; Human: 79%



[View online »](#)

Product images:



WB Suggested Anti-Bola1 Antibody Titration: 0.2-1 ug/ml; Positive Control: Mouse Kidney