

Product datasheet for **TA329940**

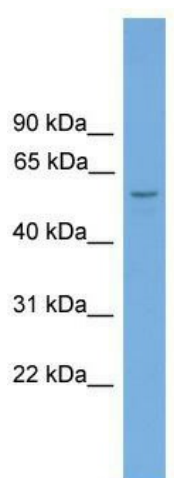
Toe1 Rabbit Polyclonal Antibody

Product data:

Product Type:	Primary Antibodies
Applications:	WB
Recommended Dilution:	WB
Reactivity:	Mouse
Host:	Rabbit
Isotype:	IgG
Clonality:	Polyclonal
Immunogen:	The immunogen for anti-Toe1 antibody: synthetic peptide directed towards the middle region of mouse Toe1. Synthetic peptide located within the following region: QSQPGTQTLAEAEDGPPTKQVCEDSLSETEKMEQKVAEGEAGDQPGSREGH
Formulation:	Liquid. Purified antibody supplied in 1x PBS buffer with 0.09% (w/v) sodium azide and 2% sucrose. <i>Note that this product is shipped as lyophilized powder to China customers.</i>
Conjugation:	Unconjugated
Storage:	Store at -20°C as received.
Stability:	Stable for 12 months from date of receipt.
Predicted Protein Size:	57 kDa
Gene Name:	target of EGR1, member 1 (nuclear)
Database Link:	NP_080930 Entrez Gene 68276 Mouse Q9D2E2
Background:	Toe1 inhibits cell growth rate and cell cycle. Toe1 induces CDKN1A expression as well as TGF-beta expression. Toe1 mediates the inhibitory growth effect of EGR1.
Synonyms:	FLJ13949
Note:	Immunogen sequence homology: Mouse: 100%



[View online »](#)

Product images:

WB Suggested Anti-Toe1 Antibody Titration: 0.2-1 ug/ml; ELISA Titer: 1:12500; Positive Control: Mouse Liver