

Product datasheet for **TA329938**

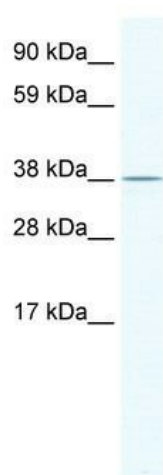
Mri1 Rabbit Polyclonal Antibody

Product data:

Product Type:	Primary Antibodies
Applications:	WB
Recommended Dilution:	WB
Reactivity:	Mouse
Host:	Rabbit
Isotype:	IgG
Clonality:	Polyclonal
Immunogen:	The immunogen for anti-Mri1 antibody: synthetic peptide directed towards the N terminal of mouse 2410018C20RIK. Synthetic peptide located within the following region: LGQVAAQEAEREGATEETVRERVIRFAEDMLEKDLKDNRSIGDLGARHLL
Formulation:	Liquid. Purified antibody supplied in 1x PBS buffer with 0.09% (w/v) sodium azide and 2% sucrose. <i>Note that this product is shipped as lyophilized powder to China customers.</i>
Conjugation:	Unconjugated
Storage:	Store at -20°C as received.
Stability:	Stable for 12 months from date of receipt.
Predicted Protein Size:	41 kDa
Gene Name:	methylthioribose-1-phosphate isomerase 1
Database Link:	NP_080699 Entrez Gene 67873 Mouse Q9CQT1
Background:	This protein was disclosed by the RIKEN Mouse Gene Encyclopaedia Project, a systematic approach to determining the full coding potential of the mouse genome, involves collection and sequencing of full length complementary DNAs and physical mapping of the corresponding genes to the mouse genome.
Synonyms:	M1Pi; MGC3207; MTNA; Ypr118w
Note:	Immunogen sequence homology: Mouse: 100%; Pig: 93%; Bovine: 93%; Rat: 86%; Horse: 86%; Human: 86%; Dog: 79%; Rabbit: 79%



[View online »](#)

Product images:

WB Suggested Anti-Mri1 Antibody Titration:
2.5ug/ml; ELISA Titer: 1:1562500; Positive Control:
NIH/3T3 cell lysate