

## Product datasheet for **TA329935**

### Ilf2 Rabbit Polyclonal Antibody

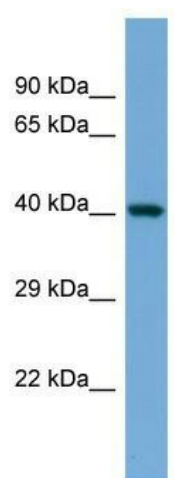
#### Product data:

Product Type:	Primary Antibodies
Applications:	WB
Recommended Dilution:	WB
Reactivity:	Mouse
Host:	Rabbit
Isotype:	IgG
Clonality:	Polyclonal
Immunogen:	The immunogen for Anti-Ilf2 antibody is: synthetic peptide directed towards the N-terminal region of MOUSE Ilf2. Synthetic peptide located within the following region: KRNQDLAPNSAEQASILSLVTKINNVIDNLIVAPGTFEVQIEEVRQVGSY
Formulation:	Liquid. Purified antibody supplied in 1x PBS buffer with 0.09% (w/v) sodium azide and 2% sucrose. <i>Note that this product is shipped as lyophilized powder to China customers.</i>
Conjugation:	Unconjugated
Storage:	Store at -20°C as received.
Stability:	Stable for 12 months from date of receipt.
Predicted Protein Size:	42 kDa
Gene Name:	interleukin enhancer binding factor 2
Database Link:	<a href="#">NP_080650</a> <a href="#">Entrez Gene 67781 Mouse</a> <a href="#">Q9CXY6</a>
Background:	Ilf2 appears to function predominantly as a heterodimeric complex with ILF3. This complex may regulate transcription of the IL2 gene during T-cell activation. It can also promote the formation of stable DNA-dependent protein kinase holoenzyme complexes on DNA.
Synonyms:	MGC8391; NF45; PRO3063
Note:	Immunogen sequence homology: Dog: 100%; Pig: 100%; Rat: 100%; Horse: 100%; Human: 100%; Mouse: 100%; Bovine: 100%; Rabbit: 100%; Zebrafish: 100%; Guinea pig: 100%



[View online »](#)

## Product images:



Host: Rabbit; Target Name: Ilf2; Sample Tissue: Mouse Heart lysates; Antibody Dilution: 1.0ug/ml