

Product datasheet for **TA329933**

Use1 Rabbit Polyclonal Antibody

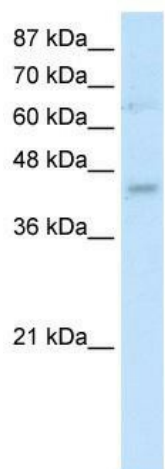
Product data:

Product Type:	Primary Antibodies
Applications:	IHC, WB
Recommended Dilution:	WB, IHC
Reactivity:	Mouse
Host:	Rabbit
Isotype:	IgG
Clonality:	Polyclonal
Immunogen:	The immunogen for anti-Use1 antibody: synthetic peptide directed towards the N terminal of mouse 2010315L10RIK. Synthetic peptide located within the following region: MAQAEGAYHRPLATSRLNLRLLCRCESMAAEKREPDEWRLEKYVGAL
Formulation:	Liquid. Purified antibody supplied in 1x PBS buffer with 0.09% (w/v) sodium azide and 2% sucrose. <i>Note that this product is shipped as lyophilized powder to China customers.</i>
Conjugation:	Unconjugated
Storage:	Store at -20°C as received.
Stability:	Stable for 12 months from date of receipt.
Predicted Protein Size:	30 kDa
Gene Name:	unconventional SNARE in the ER 1 homolog (<i>S. cerevisiae</i>)
Database Link:	NP_080193 Entrez Gene 67023 Mouse Q9CQ56
Background:	cDNA library was prepared and sequenced in Mouse Genome Encyclopedia Project of Genome Exploration Research Group in Riken Genomic Sciences Center and Genome Science laboratory in RIKEN.
Synonyms:	MDS032; p31; Q-SNARE; SLT1; USE1L
Note:	Immunogen sequence homology: Mouse: 100%; Rat: 93%

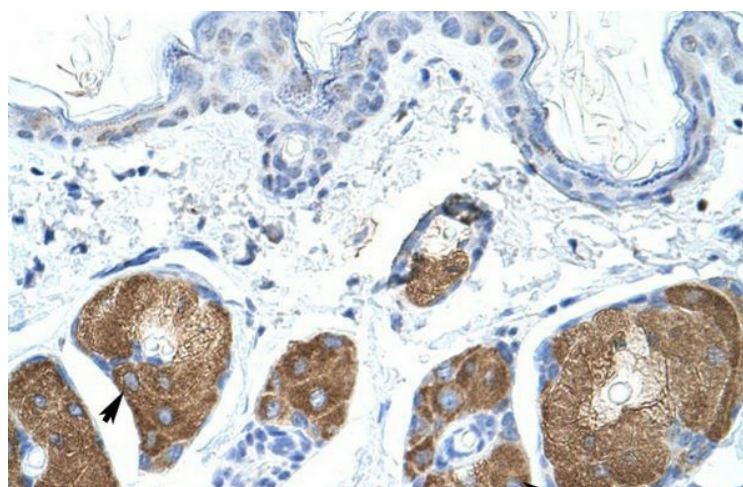


[View online »](#)

Product images:



WB Suggested Antibody Titration: 0.2-1 ug/ml;
Positive Control: SP20



Mouse Skin