

## Product datasheet for TA329932

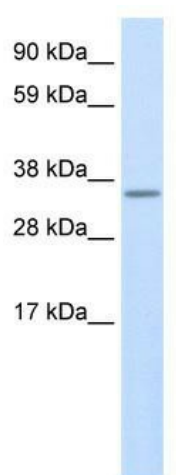
### Use1 Rabbit Polyclonal Antibody

#### Product data:

Product Type:	Primary Antibodies
Applications:	WB
Recommended Dilution:	WB
Reactivity:	Mouse
Host:	Rabbit
Isotype:	IgG
Clonality:	Polyclonal
Immunogen:	The immunogen for anti-Use1 antibody: synthetic peptide directed towards the N terminal of mouse 2010315L10RIK. Synthetic peptide located within the following region: MAQAEGAYHRPLATSRLNLRLLCRCESMAAEKREPDEWRLEKYVGAL
Formulation:	Liquid. Purified antibody supplied in 1x PBS buffer with 0.09% (w/v) sodium azide and 2% sucrose. <i>Note that this product is shipped as lyophilized powder to China customers.</i>
Conjugation:	Unconjugated
Storage:	Store at -20°C as received.
Stability:	Stable for 12 months from date of receipt.
Predicted Protein Size:	30 kDa
Gene Name:	unconventional SNARE in the ER 1 homolog ( <i>S. cerevisiae</i> )
Database Link:	<a href="#">NP_080193</a> <a href="#">Entrez Gene 67023 Mouse</a> <a href="#">Q9CQ56</a>
Background:	cDNA library was prepared and sequenced in Mouse Genome Encyclopedia Project of Genome Exploration Research Group in Riken Genomic Sciences Center and Genome Science laboratory in RIKEN.
Synonyms:	MDS032; p31; Q-SNARE; SLT1; USE1L
Note:	Immunogen sequence homology: Mouse: 100%; Rat: 93%



[View online »](#)

**Product images:**

WB Suggested Anti-Use1 Antibody Titration: 0.2-1 ug/ml; ELISA Titer: 1:62500; Positive Control: SP2/0 cell lysate