

Product datasheet for **TA329931**

Plbd1 Rabbit Polyclonal Antibody

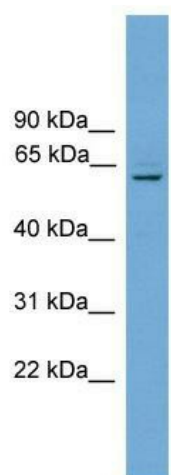
Product data:

Product Type:	Primary Antibodies
Applications:	WB
Recommended Dilution:	WB
Reactivity:	Mouse
Host:	Rabbit
Isotype:	IgG
Clonality:	Polyclonal
Immunogen:	The immunogen for anti-Plbd1 antibody: synthetic peptide corresponding to a region of Mouse. Synthetic peptide located within the following region: ESKKVEIKTVLDKNGDAYGYNDSIKTTGWGILEIRAGYGSQVLSNEIIM
Formulation:	Liquid. Purified antibody supplied in 1x PBS buffer with 0.09% (w/v) sodium azide and 2% sucrose. <i>Note that this product is shipped as lyophilized powder to China customers.</i>
Conjugation:	Unconjugated
Storage:	Store at -20°C as received.
Stability:	Stable for 12 months from date of receipt.
Predicted Protein Size:	63 kDa
Gene Name:	phospholipase B domain containing 1
Database Link:	NP_080082 Entrez Gene 66857 Mouse Q8VCI0
Background:	1100001H23Rik is a putative phospholipase.
Synonyms:	FLJ22662
Note:	Immunogen sequence homology: Mouse: 100%; Rat: 92%; Dog: 86%; Pig: 86%; Zebrafish: 82%; Guinea pig: 82%; Horse: 79%; Human: 79%; Rabbit: 79%; Bovine: 77%



[View online »](#)

Product images:



WB Suggested Anti-Plbd1 Antibody Titration: 0.2-1 ug/ml; Positive Control: Mouse Heart