

Product datasheet for **TA329930**

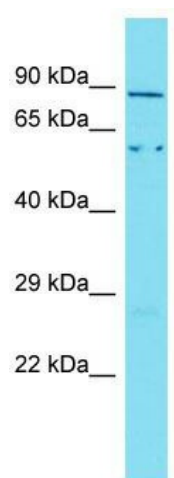
Aste1 Rabbit Polyclonal Antibody

Product data:

Product Type:	Primary Antibodies
Applications:	WB
Recommended Dilution:	WB
Reactivity:	Mouse
Host:	Rabbit
Isotype:	IgG
Clonality:	Polyclonal
Immunogen:	The immunogen for Anti-Aste1 antibody is: synthetic peptide directed towards the C-terminal region of Mouse Aste1. Synthetic peptide located within the following region: TKSYAPAEFLPKTKSKSKKKRQKKKVASLGTTADAKHWYDRSNRFGPLM
Formulation:	Liquid. Purified antibody supplied in 1x PBS buffer with 0.09% (w/v) sodium azide and 2% sucrose. <i>Note that this product is shipped as lyophilized powder to China customers.</i>
Conjugation:	Unconjugated
Storage:	Store at -20°C as received.
Stability:	Stable for 12 months from date of receipt.
Predicted Protein Size:	76 kDa
Gene Name:	asteroid homolog 1 (Drosophila)
Database Link:	NP_079927 Entrez Gene 66595 Mouse Q8BIR2
Background:	Aste1 possible role in EGF receptor signaling
Synonyms:	HT001; MGC129980
Note:	Immunogen sequence homology: Mouse: 100%; Pig: 91%; Yeast: 91%; Rat: 83%



[View online »](#)

Product images:

Host: Rabbit; Target Name: Aste1; Sample Tissue: Mouse Heart lysates; Antibody Dilution: 1.0ug/ml