

Product datasheet for TA329925

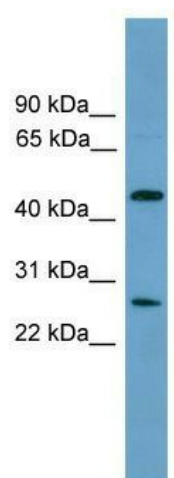
Elp4 Rabbit Polyclonal Antibody

Product data:

Product Type:	Primary Antibodies
Applications:	WB
Recommended Dilution:	WB
Reactivity:	Mouse
Host:	Rabbit
Isotype:	IgG
Clonality:	Polyclonal
Immunogen:	The immunogen for anti-Elp4 antibody: synthetic peptide corresponding to a region of Mouse. Synthetic peptide located within the following region: FMAEGIIINGHTLLVASAKENPAKILQELPAPLLDDNSKKELEDVHSAKTP
Formulation:	Liquid. Purified antibody supplied in 1x PBS buffer with 0.09% (w/v) sodium azide and 2% sucrose.
Conjugation:	Unconjugated
Storage:	Store at -20°C as received.
Stability:	Stable for 12 months from date of receipt.
Predicted Protein Size:	46 kDa
Gene Name:	elongator acetyltransferase complex subunit 4
Database Link:	NP_076365 Entrez Gene 77766 Mouse Q9ER73
Background:	Elp4 acts as subunit of the RNA polymerase II elongator complex, which is a histone acetyltransferase component of the RNA polymerase II (Pol II) holoenzyme and is involved in transcriptional elongation. Elongator may play a role in chromatin remodeling and is involved in acetylation of histones H3 and probably H4.
Synonyms:	C11orf19; dj68P15A.1; FLJ20498; hELP4; PAX6NEB; PAXNEB
Note:	Immunogen sequence homology: Mouse: 100%; Rat: 92%


[View online »](#)

Product images:



WB Suggested Anti-Elp4 Antibody Titration: 0.2-1 ug/ml; ELISA Titer: 1:12500; Positive Control: Mouse Muscle