

## Product datasheet for **TA329920**

### Tsg101 Rabbit Polyclonal Antibody

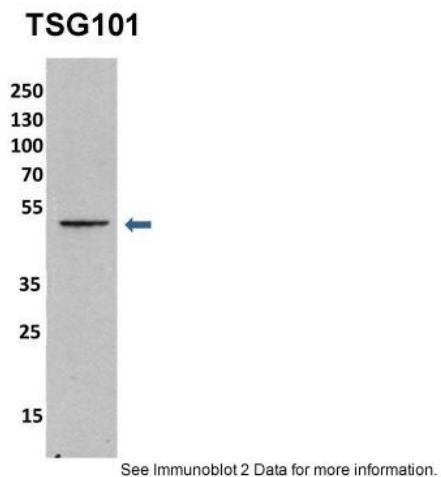
#### Product data:

Product Type:	Primary Antibodies
Applications:	IHC, WB
Recommended Dilution:	WB, IHC
Reactivity:	Mouse
Host:	Rabbit
Isotype:	IgG
Clonality:	Polyclonal
Immunogen:	The immunogen for anti-TSG101 antibody: synthetic peptide corresponding to a region of Mouse. Synthetic peptide located within the following region: RSELLELIQIMIVIFGEEPPVFSRPTVSASYPPTYATGPPNTSYMPGMPS
Formulation:	Liquid. Purified antibody supplied in 1x PBS buffer with 0.09% (w/v) sodium azide and 2% sucrose. <i>Note that this product is shipped as lyophilized powder to China customers.</i>
Conjugation:	Unconjugated
Storage:	Store at -20°C as received.
Stability:	Stable for 12 months from date of receipt.
Predicted Protein Size:	43 kDa
Gene Name:	tumor susceptibility gene 101
Database Link:	<a href="#">NP_068684</a> <a href="#">Entrez Gene 22088 Mouse</a> <a href="#">Q61187</a>
Background:	TSG101 has a direct role in the control of growth and differentiation in primary epithelial cells. It is required for normal cell function of embryonic and adult tissues but that this gene is not a tumor suppressor for sporadic forms of breast cancer.
Synonyms:	TSG10; VPS23
Note:	Immunogen sequence homology: Rat: 100%; Mouse: 100%; Pig: 93%; Goat: 93%; Bovine: 93%; Guinea pig: 93%; Dog: 86%; Horse: 79%; Human: 79%; Rabbit: 79%

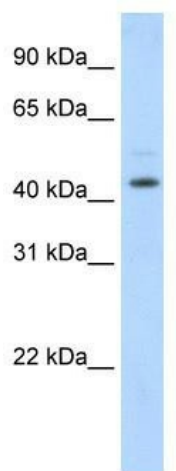


[View online »](#)

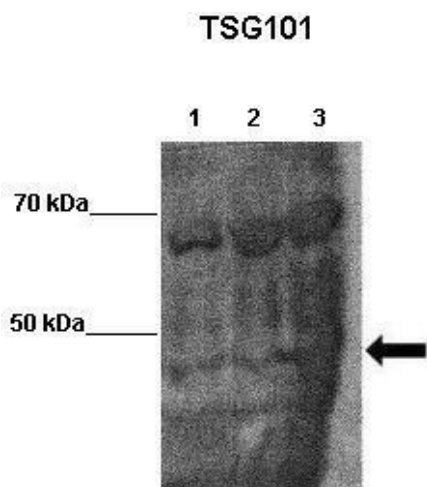
## Product images:



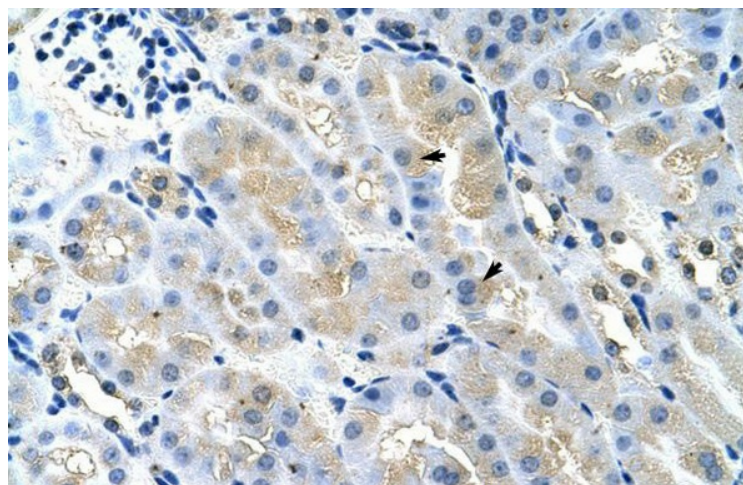
Sample Type: mouse fibroblast lysate (10 ug);  
Primary Dilution: 1:1000 (1% BSA); Secondary  
Dilution: 1:2000 (5% milk); Image Submitted By:  
Anonymous researcher See Customer Feedback  
tab for detailed information.



WB Suggested Anti-TSG101 Antibody Titration:  
1.25ug/ml; Positive Control: NIH/3T3 cell lysate



WB Suggested Anti-TSG101 Antibody ; Positive Control: Lane 1: 30ug mouse brain lysate Lane 2: 30ug mouse brain lysate Lane 3: 30ug mouse brain lysate; Primary Antibody Dilution : 1:1000; Secondary Antibody : Goat anti-rabbit-HRP; Secondary Antibody Dilutio



Rabbit Anti-Tsg101 Antibody; Paraffin Embedded Tissue: Mouse Kidney; Cellular Data: Epithelial cells of renal tubule; Antibody Concentration: 4.0-8.0 ug/ml; Magnification: 400X