

## Product datasheet for **TA329916**

### **RNF12 (RLIM) Rabbit Polyclonal Antibody**

#### **Product data:**

<b>Product Type:</b>	Primary Antibodies
<b>Applications:</b>	WB
<b>Recommended Dilution:</b>	WB
<b>Reactivity:</b>	Human
<b>Host:</b>	Rabbit
<b>Isotype:</b>	IgG
<b>Clonality:</b>	Polyclonal
<b>Immunogen:</b>	The immunogen for anti-RNF12 antibody: synthetic peptide directed towards the N terminal of human RNF12. Synthetic peptide located within the following region: MENS <del>S</del> SDN <del>D</del> KGSGDQ <del>S</del> AAQR <del>R</del> SQMDRLDRE <del>E</del> AFYQ <del>F</del> VNNLSE <del>E</del> DYRLMRDN
<b>Formulation:</b>	Liquid. Purified antibody supplied in 1x PBS buffer with 0.09% (w/v) sodium azide and 2% sucrose. <i>Note that this product is shipped as lyophilized powder to China customers.</i>
<b>Conjugation:</b>	Unconjugated
<b>Storage:</b>	Store at -20°C as received.
<b>Stability:</b>	Stable for 12 months from date of receipt.
<b>Predicted Protein Size:</b>	68 kDa
<b>Gene Name:</b>	ring finger protein, LIM domain interacting
<b>Database Link:</b>	<a href="#">NP_057204</a> <a href="#">Entrez Gene 51132 Human</a> <a href="#">Q9NVW2</a>
<b>Background:</b>	The protein encoded by this gene is a RING-H2 zinc finger protein. It has been shown to be an E3 ubiquitin protein ligase that targets LIM domain binding 1 (LDB1/CLIM), and causes proteasome-dependent degradation of LDB1. This protein and LDB1 are co-repressors of LHX1/LIM-1, a homeodomain transcription factor. Multiple alternatively spliced variants, encoding the same protein, have been identified. [provided by RefSeq, Feb 2009]
<b>Synonyms:</b>	NY-REN-43; RNF12

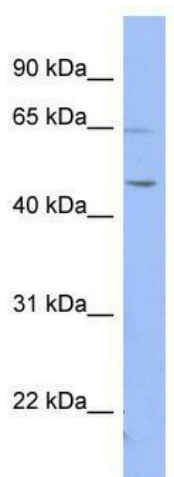


[View online »](#)

**Note:** Immunogen sequence homology: Dog: 100%; Pig: 100%; Rat: 100%; Horse: 100%; Human: 100%; Guinea pig: 100%; Mouse: 93%; Bovine: 93%; Rabbit: 93%

**Protein Families:** Druggable Genome, Transcription Factors

**Product images:**



WB Suggested Anti-RNF12 Antibody Titration: 0.2-1 ug/ml; ELISA Titer: 1:62500; Positive Control: HT1080 cell lysateRLIM is supported by BioGPS gene expression data to be expressed in HT1080