

Product datasheet for **TA329914**

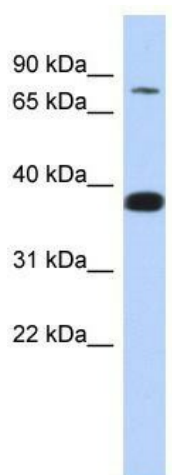
ZNF526 Rabbit Polyclonal Antibody

Product data:

Product Type:	Primary Antibodies
Applications:	WB
Recommended Dilution:	WB
Reactivity:	Human
Host:	Rabbit
Isotype:	IgG
Clonality:	Polyclonal
Immunogen:	The immunogen for anti-ZNF526 antibody: synthetic peptide directed towards the N terminal of human ZNF526. Synthetic peptide located within the following region: PPTPLPPPSPSEVKMEPYECPECSLTCATPEEFLEHQGTHFDSLEKEER
Formulation:	Liquid. Purified antibody supplied in 1x PBS buffer with 0.09% (w/v) sodium azide and 2% sucrose.
Conjugation:	Unconjugated
Storage:	Store at -20°C as received.
Stability:	Stable for 12 months from date of receipt.
Predicted Protein Size:	74 kDa
Gene Name:	zinc finger protein 526
Database Link:	NP_597701 Entrez Gene 116115 Human Q8TF50
Background:	ZNF526 belongs to the krueppel C2H2-type zinc-finger protein family. It contains 13 C2H2-type zinc fingers. ZNF526 may be involved in transcriptional regulation.
Synonyms:	DKFZp762O059; KIAA1951; MGC4267
Note:	Immunogen sequence homology: Dog: 100%; Pig: 100%; Rat: 100%; Horse: 100%; Human: 100%; Mouse: 100%; Bovine: 100%; Rabbit: 100%; Guinea pig: 100%



[View online »](#)

Product images:

WB Suggested Anti-ZNF526 Antibody Titration:
0.2-1 ug/ml; ELISA Titer: 1:12500; Positive Control:
MCF7 cell lysate