

Product datasheet for **TA329912**

PRMT3 Rabbit Polyclonal Antibody

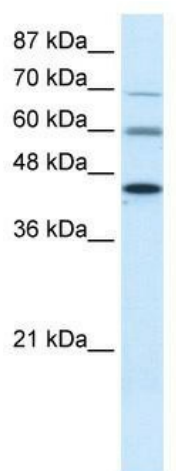
Product data:

Product Type:	Primary Antibodies
Applications:	WB
Recommended Dilution:	WB
Reactivity:	Human
Host:	Rabbit
Isotype:	IgG
Clonality:	Polyclonal
Immunogen:	The immunogen for anti-PRMT3 antibody: synthetic peptide directed towards the middle region of human PRMT3. Synthetic peptide located within the following region: FSSYGHYGIHEEMLKDKIRTESYRDFIYQNPHIFKDKVLDVGCCTGILS
Formulation:	Liquid. Purified antibody supplied in 1x PBS buffer with 0.09% (w/v) sodium azide and 2% sucrose. <i>Note that this product is shipped as lyophilized powder to China customers.</i>
Conjugation:	Unconjugated
Storage:	Store at -20°C as received.
Stability:	Stable for 12 months from date of receipt.
Predicted Protein Size:	60 kDa
Gene Name:	protein arginine methyltransferase 3
Database Link:	NP_005779 Entrez Gene 10196 Human O60678
Background:	PRMT3 is a ribosomal protein methyltransferase that affects the cellular level of ribosomal subunits
Synonyms:	HRMT1L3
Note:	Immunogen sequence homology: Dog: 100%; Pig: 100%; Rat: 100%; Horse: 100%; Human: 100%; Mouse: 100%; Bovine: 100%; Guinea pig: 100%; Rabbit: 93%; Yeast: 79%
Protein Families:	Druggable Genome



[View online »](#)

Product images:



WB Suggested Anti-PRMT3 Antibody Titration:
0.2-1 ug/ml; Positive Control: HepG2 cell lysate