

Product datasheet for **TA329910**

MYF6 Rabbit Polyclonal Antibody

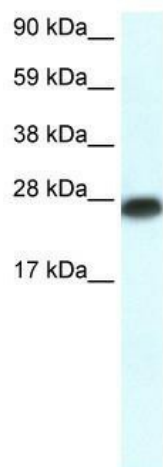
Product data:

Product Type:	Primary Antibodies
Applications:	IHC, WB
Recommended Dilution:	WB, IHC
Reactivity:	Human
Host:	Rabbit
Isotype:	IgG
Clonality:	Polyclonal
Immunogen:	The immunogen for anti-MYF6 antibody: synthetic peptide directed towards the N terminal of human MYF6. Synthetic peptide located within the following region: PGLQPPHCPGQCLIWACKTCKRKSAPTDRRKAATLRERRRLKKINEAFEA
Formulation:	Liquid. Purified antibody supplied in 1x PBS buffer with 0.09% (w/v) sodium azide and 2% sucrose. <i>Note that this product is shipped as lyophilized powder to China customers.</i>
Conjugation:	Unconjugated
Storage:	Store at -20°C as received.
Stability:	Stable for 12 months from date of receipt.
Predicted Protein Size:	27 kDa
Gene Name:	myogenic factor 6
Database Link:	NP_002460 Entrez Gene 4618 Human P23409
Background:	MYF6 is a part of the myogenic basic helix-loop-helix family of transcription factors, and can activate the muscle differentiation program.
Synonyms:	bHLHc4; CNM3; MRF4; myf-6
Note:	Immunogen sequence homology: Dog: 100%; Pig: 100%; Rat: 100%; Goat: 100%; Horse: 100%; Human: 100%; Mouse: 100%; Sheep: 100%; Bovine: 100%; Rabbit: 100%; Zebrafish: 100%; Guinea pig: 100%
Protein Families:	Druggable Genome, Transcription Factors

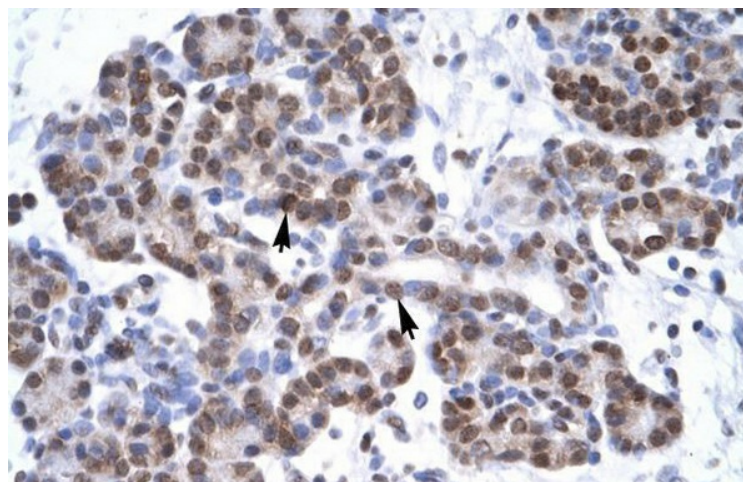


[View online »](#)

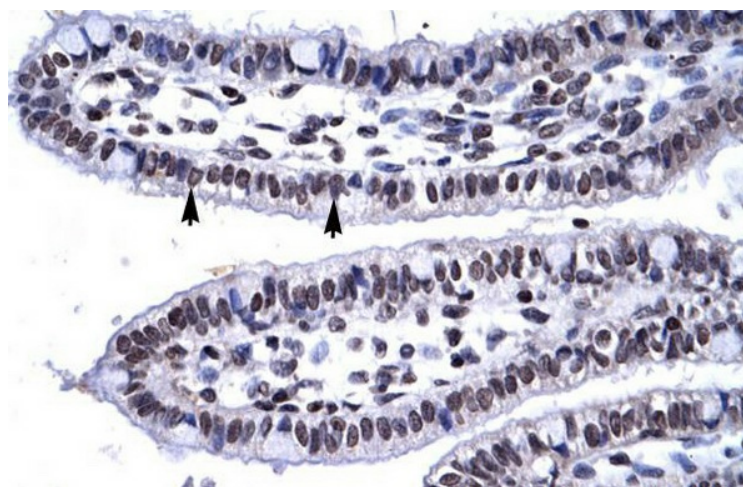
Product images:



WB Suggested Anti-MYF6 Antibody Titration: 0.2-1 ug/ml; ELISA Titer: 1:12500; Positive Control: Human heart



Human Pancreas



Human Intestine