

Product datasheet for **TA329906**

WNT2 Rabbit Polyclonal Antibody

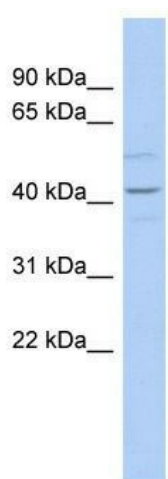
Product data:

Product Type:	Primary Antibodies
Applications:	WB
Recommended Dilution:	WB
Reactivity:	Human
Host:	Rabbit
Isotype:	IgG
Clonality:	Polyclonal
Immunogen:	The immunogen for anti-WNT2 antibody: synthetic peptide directed towards the middle region of human WNT2. Synthetic peptide located within the following region: GSAKDSKGIFDWGGCSDNIDYGIKFARAFVDAKERKGGKDARALMNLHNNR
Formulation:	Liquid. Purified antibody supplied in 1x PBS buffer with 0.09% (w/v) sodium azide and 2% sucrose. <i>Note that this product is shipped as lyophilized powder to China customers.</i>
Conjugation:	Unconjugated
Storage:	Store at -20°C as received.
Stability:	Stable for 12 months from date of receipt.
Predicted Protein Size:	38 kDa
Gene Name:	Wnt family member 2
Database Link:	NP_003382 Entrez Gene 7472 Human P09544



[View online »](#)

- Background:** WNT2 is the ligand for members of the frizzled family of seven transmembrane receptors. WNT2 is a probable developmental protein. WNT2 may be a signaling molecule which affects the development of discrete regions of tissues. WNT2 is likely to signal over only few cell diameters. The WNT gene family consists of structurally related genes which encode secreted signaling proteins. These proteins have been implicated in oncogenesis and in several developmental processes, including regulation of cell fate and patterning during embryogenesis. This gene is a member of the WNT gene family, and is expressed in the thalamus. It encodes a protein which shows 96% amino acid identity to the mouse Wnt2 protein. Based on the map location of this gene in the 7q31 region, and the phenotype of the diminished social interaction in the knockout mouse, this gene is suggested as a strong candidate gene for autism, a prototypical pervasive development disorder. Publication Note: This RefSeq record includes a subset of the publications that are available for this gene. Please see the Entrez Gene record to access additional publications.
- Synonyms:** INT1L1; IRP
- Note:** Immunogen sequence homology: Dog: 100%; Pig: 100%; Rat: 100%; Horse: 100%; Human: 100%; Mouse: 100%; Sheep: 100%; Bovine: 100%; Rabbit: 100%; Guinea pig: 100%; Zebrafish: 87%
- Protein Families:** Adult stem cells, Cancer stem cells, ES Cell Differentiation/IPS, Secreted Protein, Stem cell relevant signaling - Wnt Signaling pathway
- Protein Pathways:** Basal cell carcinoma, Hedgehog signaling pathway, Melanogenesis, Pathways in cancer, Wnt signaling pathway

Product images:

WB Suggested Anti-WNT2 Antibody Titration: 0.2-1 ug/ml; ELISA Titer: 1:1562500; Positive Control: THP-1 cell lysate