

Product datasheet for **TA329901**

Dishevelled 2 (DVL2) Rabbit Polyclonal Antibody

Product data:

Product Type:	Primary Antibodies
Applications:	IHC, WB
Recommended Dilution:	WB, IHC
Reactivity:	Human
Host:	Rabbit
Isotype:	IgG
Clonality:	Polyclonal
Immunogen:	The immunogen for anti-DVL2 antibody: synthetic peptide directed towards the N terminal of human DVL2. Synthetic peptide located within the following region: AGSSTGGGGVGETKVIYHLDEEETPYLVKIPVPAERITLGDFKSVLQRPA
Formulation:	Liquid. Purified antibody supplied in 1x PBS buffer with 0.09% (w/v) sodium azide and 2% sucrose. <i>Note that this product is shipped as lyophilized powder to China customers.</i>
Conjugation:	Unconjugated
Storage:	Store at -20°C as received.
Stability:	Stable for 12 months from date of receipt.
Predicted Protein Size:	79 kDa
Gene Name:	dishevelled segment polarity protein 2
Database Link:	NP_004413 Entrez Gene 1856 Human O14641



[View online »](#)

Background:

DVL2 is a member of the dishevelled (dsh) protein family. It is a 90-kD protein that undergoes posttranslational phosphorylation to form a 95-kD cytoplasmic protein, which may play a role in the signal transduction pathway mediated by multiple Wnt proteins. The mechanisms of dishevelled function in Wnt signaling are likely to be conserved among metazoans. This gene encodes a member of the dishevelled (dsh) protein family. The vertebrate dsh proteins have approximately 40% amino acid sequence similarity with *Drosophila* dsh. This gene encodes a 90-kD protein that undergoes posttranslational phosphorylation to form a 95-kD cytoplasmic protein, which may play a role in the signal transduction pathway mediated by multiple Wnt proteins. The mechanisms of dishevelled function in Wnt signaling are likely to be conserved among metazoans. Publication Note: This RefSeq record includes a subset of the publications that are available for this gene. Please see the Entrez Gene record to access additional publications.

Synonyms:

dishevelled; dishevelled 2; dishevelled 2 (homologous to *Drosophila* dsh); DSH homolog 2; dsh homolog 2 (*Drosophila*); segment polarity protein dishevelled homolog DVL-2

Note:

Immunogen sequence homology: Dog: 100%; Pig: 100%; Rat: 100%; Horse: 100%; Human: 100%; Mouse: 100%; Bovine: 100%; Rabbit: 100%; Guinea pig: 100%; Zebrafish: 93%; Yeast: 82%

Protein Families:

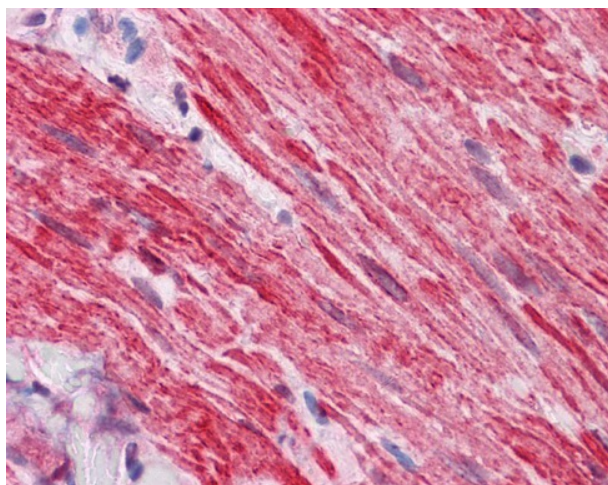
Druggable Genome, ES Cell Differentiation/IPS

Protein Pathways:

Basal cell carcinoma, Colorectal cancer, Melanogenesis, Notch signaling pathway, Pathways in cancer, Wnt signaling pathway

Product images:

WB Suggested Anti-DVL2 Antibody Titration: 0.2-1 ug/ml; ELISA Titer: 1:312500; Positive Control: Transfected 293T



IHC Information: Paraffin embedded small intestine, muscularis propria tissue, tested with an antibody Dilution of 5 ug/ml.