

Product datasheet for **TA329898**

NR2E1 Rabbit Polyclonal Antibody

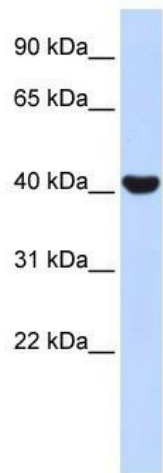
Product data:

Product Type:	Primary Antibodies
Applications:	IHC, WB
Recommended Dilution:	WB, IHC
Reactivity:	Human
Host:	Rabbit
Isotype:	IgG
Clonality:	Polyclonal
Immunogen:	The immunogen for anti-NR2E1 antibody: synthetic peptide directed towards the N terminal of human NR2E1. Synthetic peptide located within the following region: MSKPAGSTSRILDIPCKVCGDRSSGKHYGVYACDGC SGFFKRSIRRNRTY
Formulation:	Liquid. Purified antibody supplied in 1x PBS buffer with 0.09% (w/v) sodium azide and 2% sucrose. <i>Note that this product is shipped as lyophilized powder to China customers.</i>
Conjugation:	Unconjugated
Storage:	Store at -20°C as received.
Stability:	Stable for 12 months from date of receipt.
Predicted Protein Size:	42 kDa
Gene Name:	nuclear receptor subfamily 2 group E member 1
Database Link:	NP_003260 Entrez Gene 7101 Human Q9Y466
Background:	The NR2E1 gene is a member of the steroid nuclear receptor superfamily and is predominately expressed in the brain. The contributions of this gene to human B-cell leukemia and to brain development are unknown at present.
Synonyms:	TLL; TLX; XTLL
Note:	Immunogen sequence homology: Dog: 100%; Pig: 100%; Rat: 100%; Horse: 100%; Human: 100%; Mouse: 100%; Bovine: 100%; Rabbit: 100%; Zebrafish: 100%; Guinea pig: 100%
Protein Families:	Druggable Genome, Nuclear Hormone Receptor, Transcription Factors



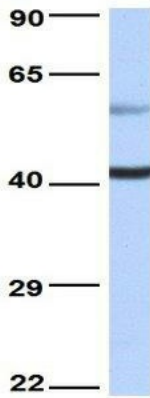
[View online »](#)

Product images:



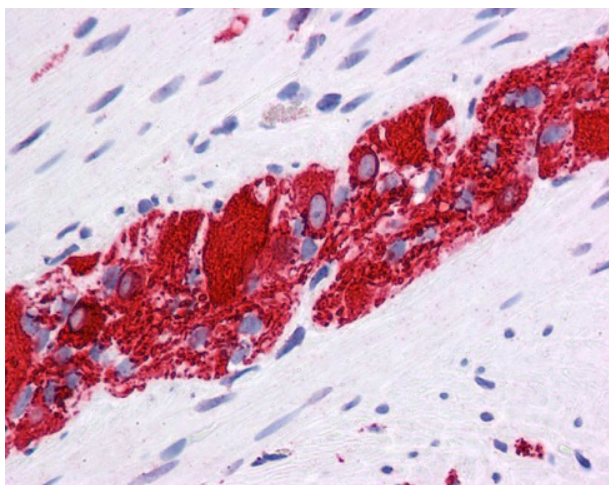
WB Suggested Anti-NR2E1 Antibody Titration: 1 ug/ml; Positive Control: Fetal Muscle cell lysate

NR2E1

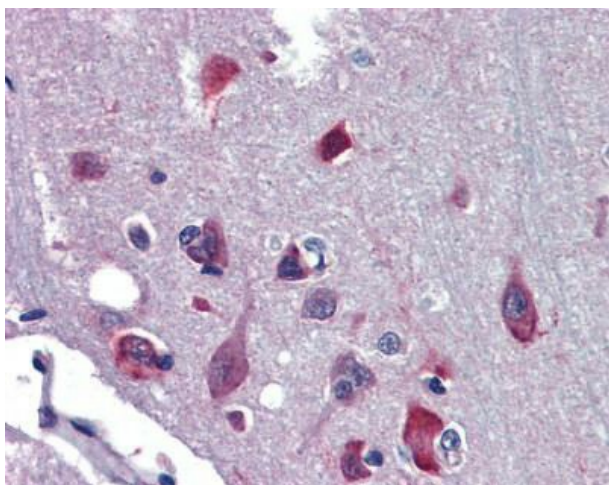


Rabbit Anti-NR2E1
 Sample Type: Human Fetal Heart
 Antibody Concentration: 1ug/mL

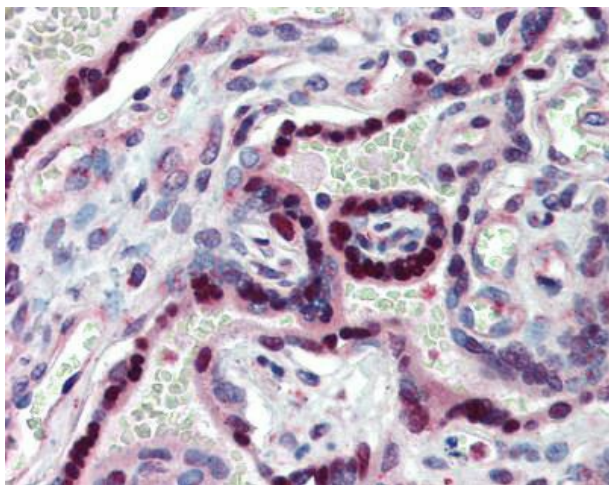
Host: Rabbit; Target Name: NR2E1; Sample Tissue: Human Fetal Heart; Antibody Dilution: 1.0ug/ml



Human Prostate



Human Placenta



Human Brain