

Product datasheet for **TA329896**

CGI 62 (ZC2HC1A) Rabbit Polyclonal Antibody

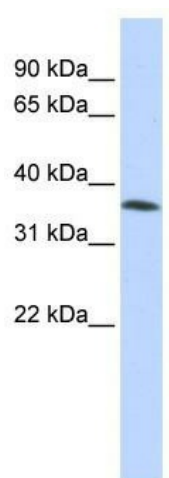
Product data:

Product Type:	Primary Antibodies
Applications:	WB
Recommended Dilution:	WB
Reactivity:	Human
Host:	Rabbit
Isotype:	IgG
Clonality:	Polyclonal
Immunogen:	The immunogen for anti-C8orf70 antibody: synthetic peptide directed towards the middle region of human C8orf70. Synthetic peptide located within the following region: QAARISNKGKGFSTDTKGKPTSRTQVYKPPALKKSNSPGTASSGSSRLPQP
Formulation:	Liquid. Purified antibody supplied in 1x PBS buffer with 0.09% (w/v) sodium azide and 2% sucrose. <i>Note that this product is shipped as lyophilized powder to China customers.</i>
Conjugation:	Unconjugated
Storage:	Store at -20°C as received.
Stability:	Stable for 12 months from date of receipt.
Predicted Protein Size:	35 kDa
Gene Name:	zinc finger C2HC-type containing 1A
Database Link:	NP_057094 Entrez Gene 51101 Human Q96GY0
Background:	The exact function of FAM164A(C8orf70) remains unknown.
Synonyms:	C8orf70; CGI-62; FAM164A
Note:	Immunogen sequence homology: Dog: 100%; Pig: 100%; Human: 100%; Guinea pig: 100%; Rat: 93%; Rabbit: 93%; Bovine: 92%; Horse: 86%; Mouse: 79%



[View online »](#)

Product images:



WB Suggested Anti-C8orf70 Antibody Titration:
0.2-1 ug/ml; ELISA Titer: 1:62500; Positive Control:
HepG2 cell lysate