

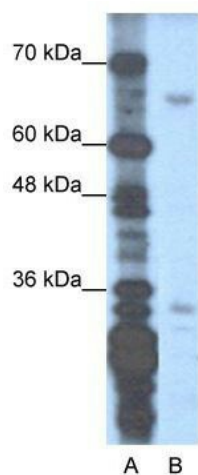
Product datasheet for **TA329895**

ZNF691 Rabbit Polyclonal Antibody

Product data:

Product Type:	Primary Antibodies
Applications:	WB
Recommended Dilution:	WB
Reactivity:	Human
Host:	Rabbit
Isotype:	IgG
Clonality:	Polyclonal
Immunogen:	The immunogen for anti-ZNF691 antibody: synthetic peptide directed towards the N terminal of human ZNF691. Synthetic peptide located within the following region: GSEKEQSPEPHLP EEGGGKPWRVDDSEGSWIPPGEKEHGQESLDELQE
Formulation:	Liquid. Purified antibody supplied in 1x PBS buffer with 0.09% (w/v) sodium azide and 2% sucrose.
Conjugation:	Unconjugated
Storage:	Store at -20°C as received.
Stability:	Stable for 12 months from date of receipt.
Predicted Protein Size:	33 kDa
Gene Name:	zinc finger protein 691
Database Link:	NP_056995 Entrez Gene 51058 Human Q5VV52
Background:	ZNF691 may be involved in transcriptional regulation
Synonyms:	Zfp691
Note:	Immunogen sequence homology: Human: 100%; Pig: 92%; Rat: 92%; Bovine: 92%; Dog: 83%; Horse: 83%; Mouse: 83%; Rabbit: 83%


[View online »](#)

Product images:


WB Suggested Anti-ZNF691 Antibody Titration:
1.25 ug/ml; Positive Control: Transfected 293T