

Product datasheet for **TA329894**

BOLA1 Rabbit Polyclonal Antibody

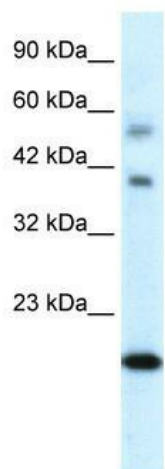
Product data:

Product Type:	Primary Antibodies
Applications:	IHC, WB
Recommended Dilution:	WB, IHC
Reactivity:	Human
Host:	Rabbit
Isotype:	IgG
Clonality:	Polyclonal
Immunogen:	The immunogen for anti-CGI-143 antibody: synthetic peptide directed towards the N terminal of human CGI-143. Synthetic peptide located within the following region: AGSGAIGPVAAIRTKLEEALSPEVLELRNESGGHAVPPGSETHFRVAVV
Formulation:	Liquid. Purified antibody supplied in 1x PBS buffer with 0.09% (w/v) sodium azide and 2% sucrose. <i>Note that this product is shipped as lyophilized powder to China customers.</i>
Conjugation:	Unconjugated
Storage:	Store at -20°C as received.
Stability:	Stable for 12 months from date of receipt.
Predicted Protein Size:	14 kDa
Gene Name:	bolA family member 1
Database Link:	NP_057158 Entrez Gene 51027 Human Q9Y3E2
Background:	CGI-143 encodes proteins that seem to be involved in cell proliferation or cell-cycle regulation, but the molecular function is still unknown.
Synonyms:	CGI-143
Note:	Immunogen sequence homology: Pig: 100%; Rat: 100%; Human: 100%; Bovine: 100%; Mouse: 93%; Rabbit: 93%; Guinea pig: 93%; Zebrafish: 91%; Dog: 86%
Protein Families:	Transcription Factors

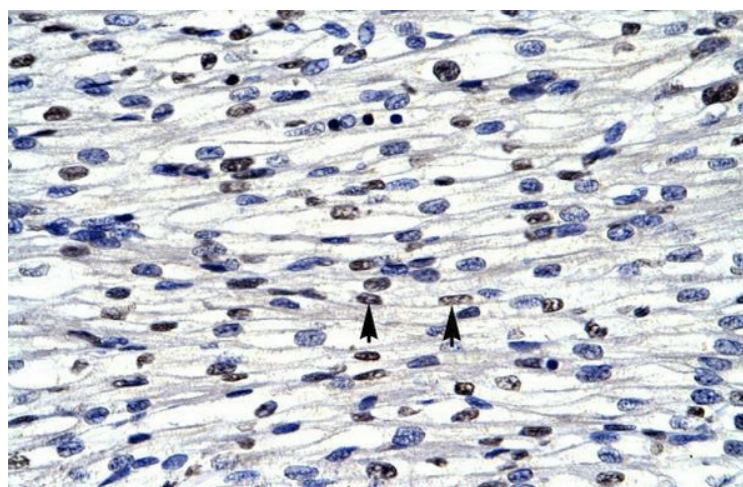


[View online »](#)

Product images:



WB Suggested Anti-CGI-143 Antibody Titration: 0.2-1 ug/ml; Positive Control: Human heart



Human Heart