

Product datasheet for **TA329893**

PBX3 Rabbit Polyclonal Antibody

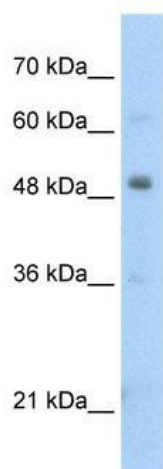
Product data:

Product Type:	Primary Antibodies
Applications:	IHC, WB
Recommended Dilution:	WB, IHC
Reactivity:	Human
Host:	Rabbit
Isotype:	IgG
Clonality:	Polyclonal
Immunogen:	The immunogen for anti-PBX3 antibody: synthetic peptide directed towards the N terminal of human PBX3. Synthetic peptide located within the following region: SRMLQTLAGVNLAGHSVQGGMALPPPPHGHEGADGDGRKQDIGDILHQIM
Formulation:	Liquid. Purified antibody supplied in 1x PBS buffer with 0.09% (w/v) sodium azide and 2% sucrose. <i>Note that this product is shipped as lyophilized powder to China customers.</i>
Conjugation:	Unconjugated
Storage:	Store at -20°C as received.
Stability:	Stable for 12 months from date of receipt.
Predicted Protein Size:	47 kDa
Gene Name:	PBX homeobox 3
Database Link:	NP_001128250 Entrez Gene 5090 Human P40426
Background:	PBX3 is a transcriptional activator that binds the sequence 5'-ATCAATCAA-3'.
Synonyms:	OTTHUMP00000022145; OTTHUMP00000064213; pre-B-cell leukemia homeobox 3; pre-B-cell leukemia transcription factor 3
Note:	Immunogen sequence homology: Pig: 100%; Rat: 100%; Human: 100%; Mouse: 100%; Bovine: 100%; Guinea pig: 100%; Zebrafish: 85%
Protein Families:	Transcription Factors

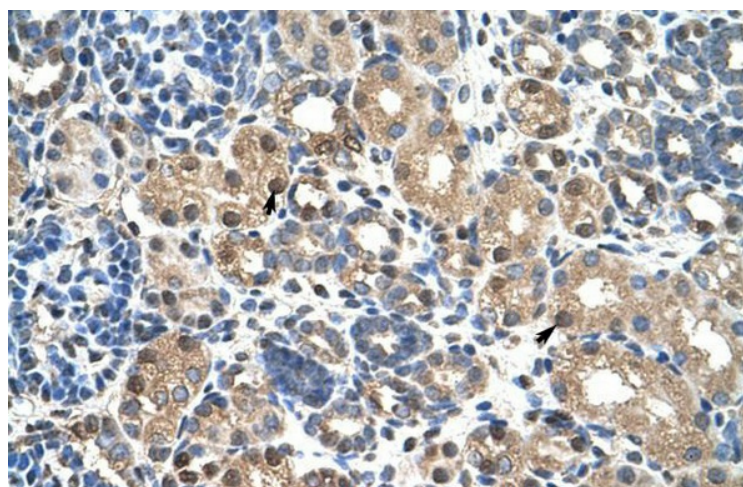


[View online »](#)

Product images:



WB Suggested Anti-PBX3 Antibody Titration: 2.5 ug/ml; Positive Control: HepG2 cell lysate



Human kidney